

Bench Mart SR

ASSEMBLY INSTRUCTIONS



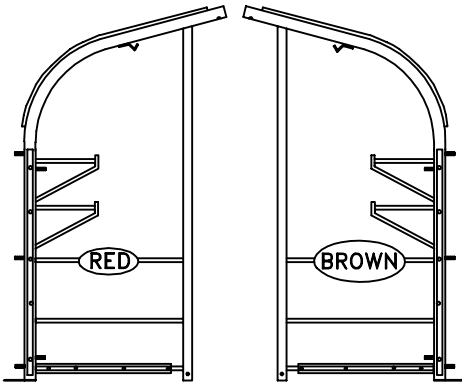
IMPORTANT

Please read these instructions carefully before you start to assemble this greenhouse. Save these instructions for future reference.



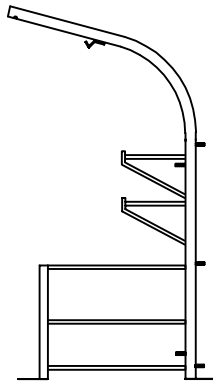
PARTS IDENTIFICATION

BMSR 99'

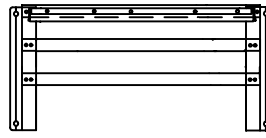


BMS1212
LT MODULE

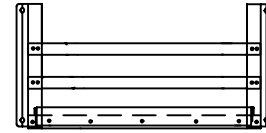
BMS1203
RT MODULE



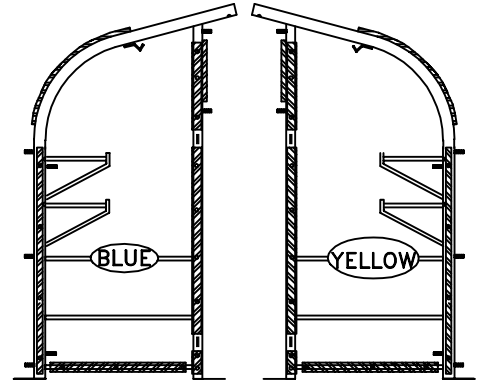
BMS1213
INTERMEDIATE MODULE



BMS1102
UPPER SLIDE PANEL



BMS1101
LOWER SLIDE PANEL



BMS1235
SIDE DOOR
LT MODULE

BMS1236
SIDE DOOR
RT MODULE

BMS1215 (GREEN)
FRONT BASE

BMS1126
44" BASKET PURLIN

BMS1201
END PEAK CONNECTOR

BMS1205 (YELLOW)
END TOP HOOP

BMS1123
79" BASKET PURLIN

BMS1200
INTERMEDIATE PEAK CONNECTOR

BMS1211
INTERMEDIATE TOP HOOP

BMS1124
80 1/4" BASKET PURLIN

BMS1116 (BLUE)
DIAGONAL PURLIN

GM4000
6'-1 1/2" HORIZONTAL BASKET PURLIN

BMS1227 (BROWN)
DIAGONAL STRUT

BMS1207 (BLACK)
REAR VERTICAL

BMS1120
V BRACKET

BMS1214 (ORANGE)
RT DOOR JAMB

BMS1217 (WHITE)
LT DOOR JAMB

BMS1209
POWER POLE

BMS1208
REAR BASE

BMS1118
SLIDING DOOR RAIL

NB1925
SNAPPER PIN

GM2970
HOOP PAD

NB1901
3/8" WING NUT

NYLON WASHER
NB1923

BASKET PURLIN HOOK

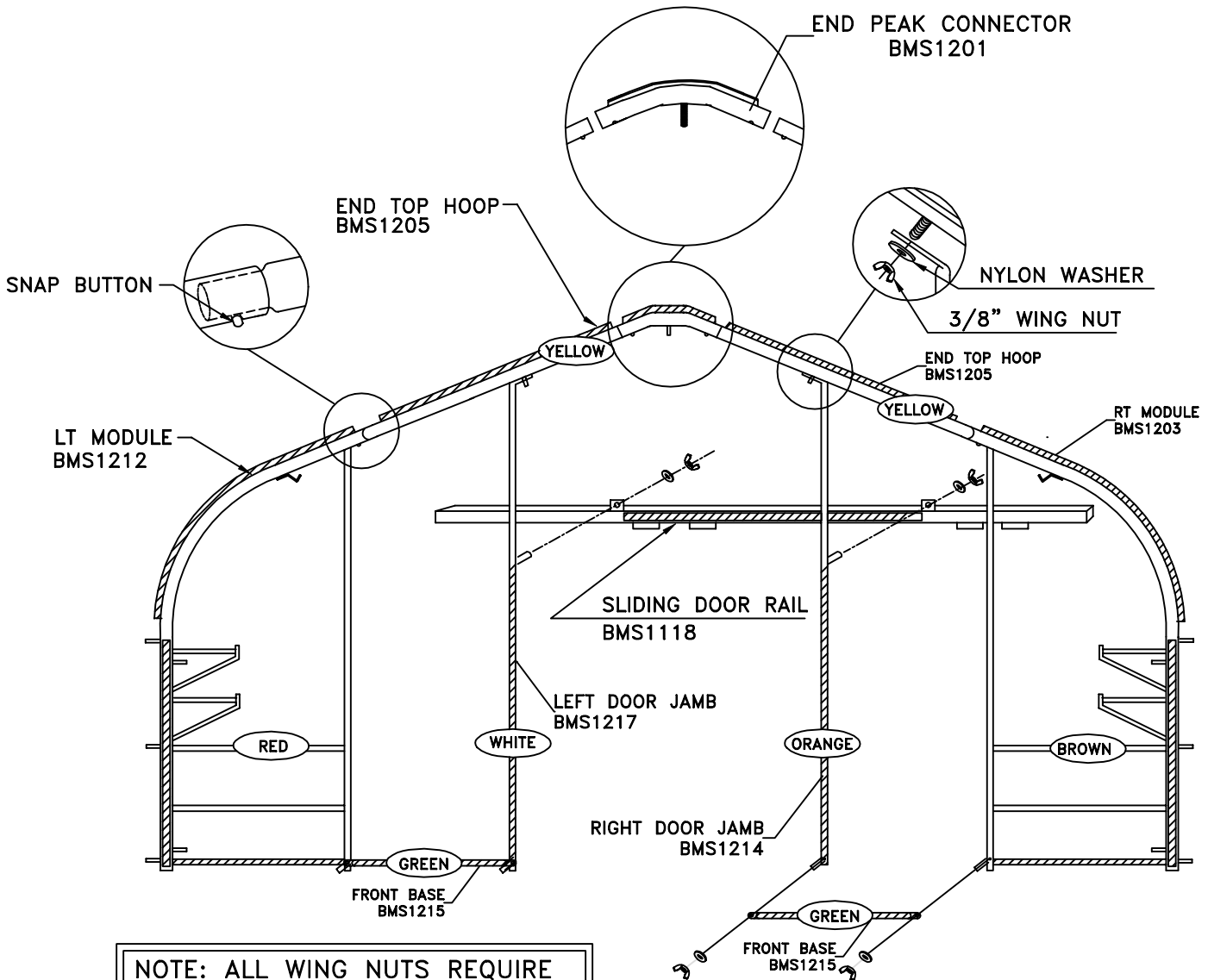
FT2051
39"

BMS1228
25"

FT2030
"S" HOOK

DOOR END FRAME ASSEMBLY

BMSR 99'



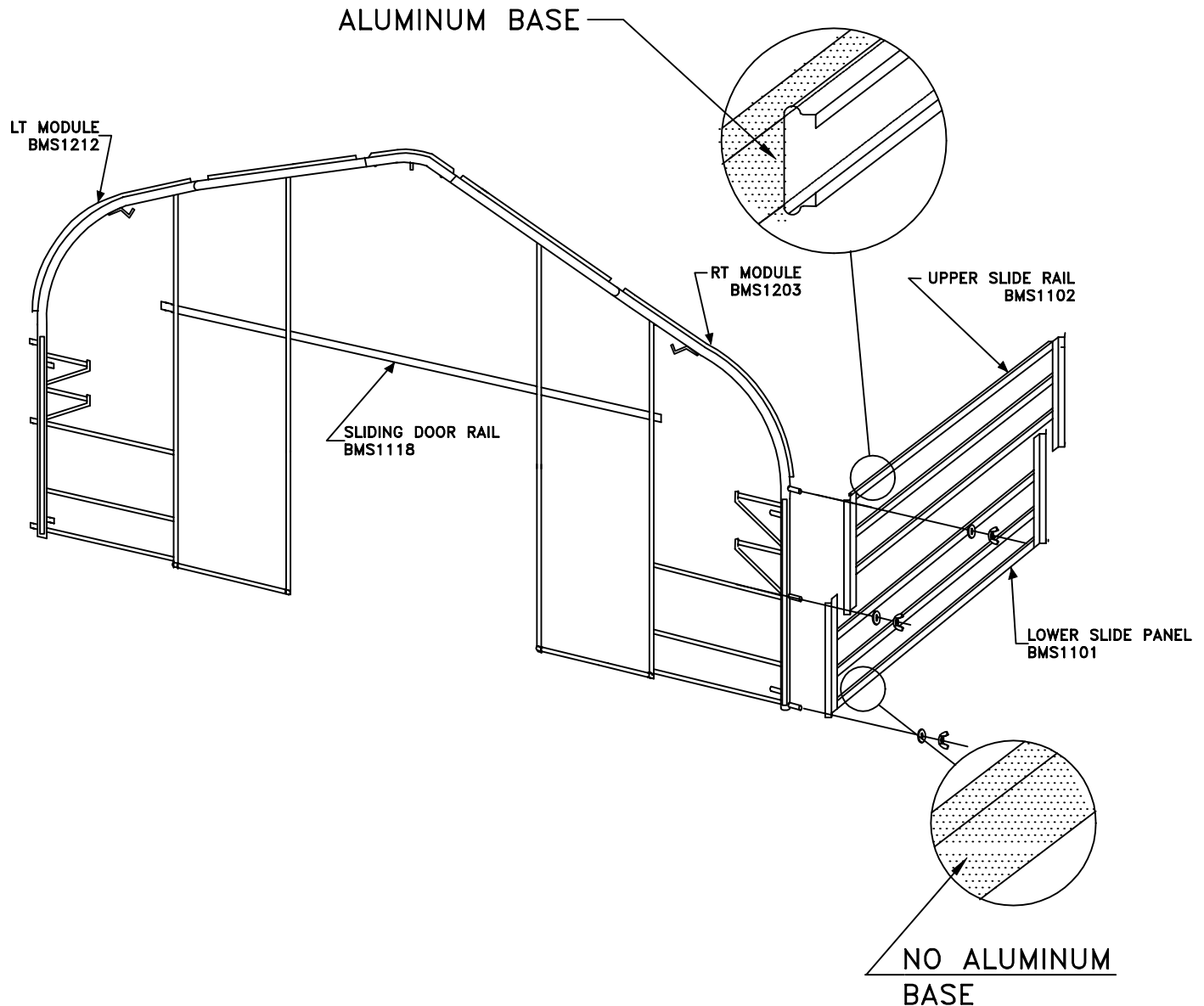
NOTE: ALL WING NUTS REQUIRE WHITE NYLON WASHERS.

1. Arrange frame parts as viewed above on the ground. Be sure to position all components with the aluminum wiggle base as shown. (Wiggle base shown shaded)
2. Insert top hoop (yellow) into the modules (red & brown) by pushing in on snap button while sliding parts together.
3. Install end peak connector with aluminum wiggle base using the same snap button method.
4. Next, install the door jambs (white & orange), and front rails (green).
5. You can attach the door rail after the end frame has been raised. Be sure to tighten all wing nuts before standing the hoop up.

H108 74610-8

SLIDE PANEL INSTALLATION

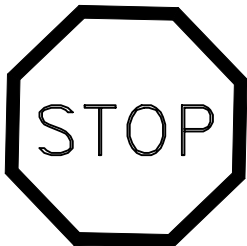
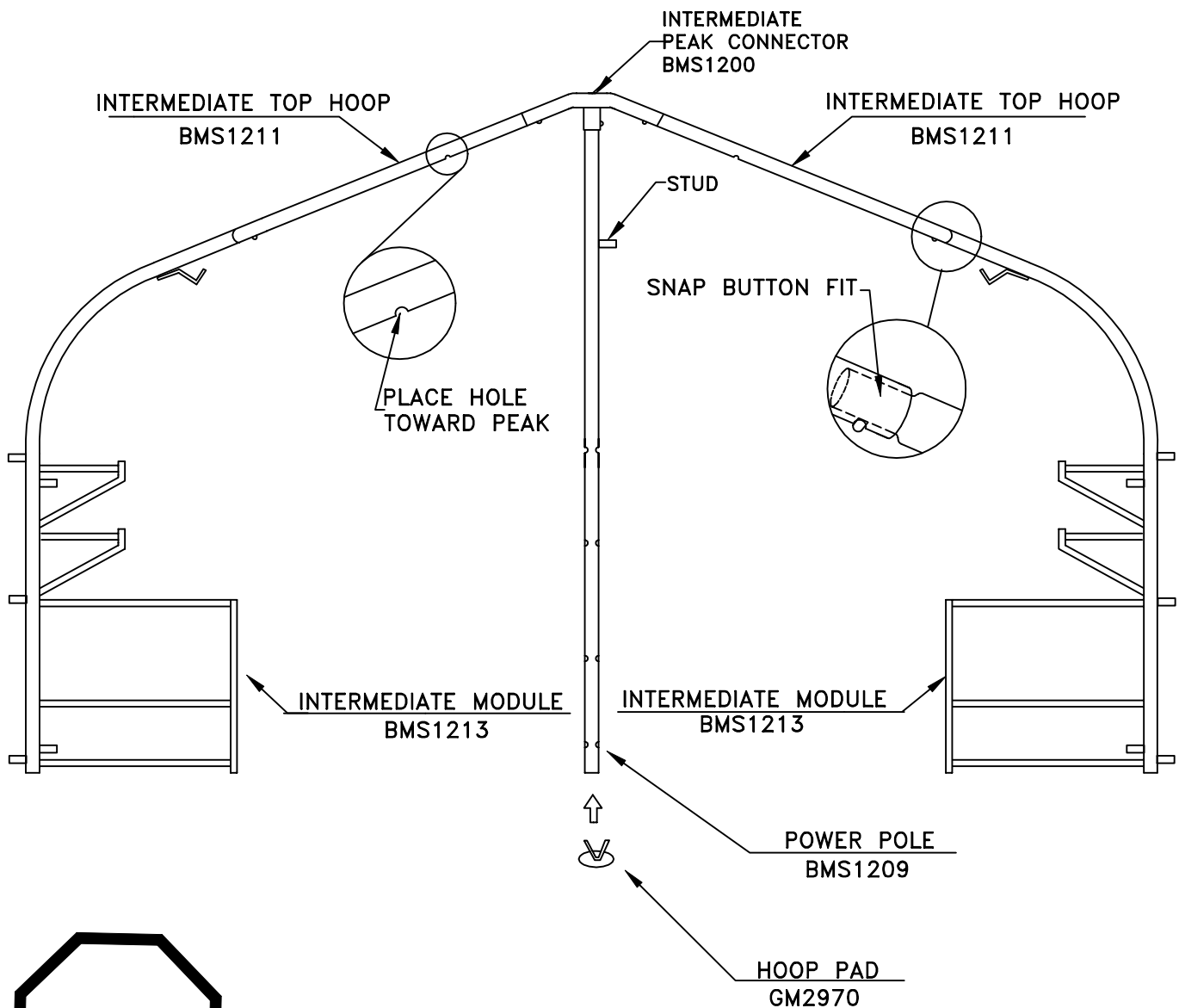
BMSR 99'



6. In order to hold the door end frame upright, install the lower slide panel (without aluminum base) first. Then install the upper slide panel. Use the nylon washers and wing nuts to secure the slide panels.
7. Be sure to install slide panels on both sides of the door end frame.

6318 74611-8

PAGE TWO

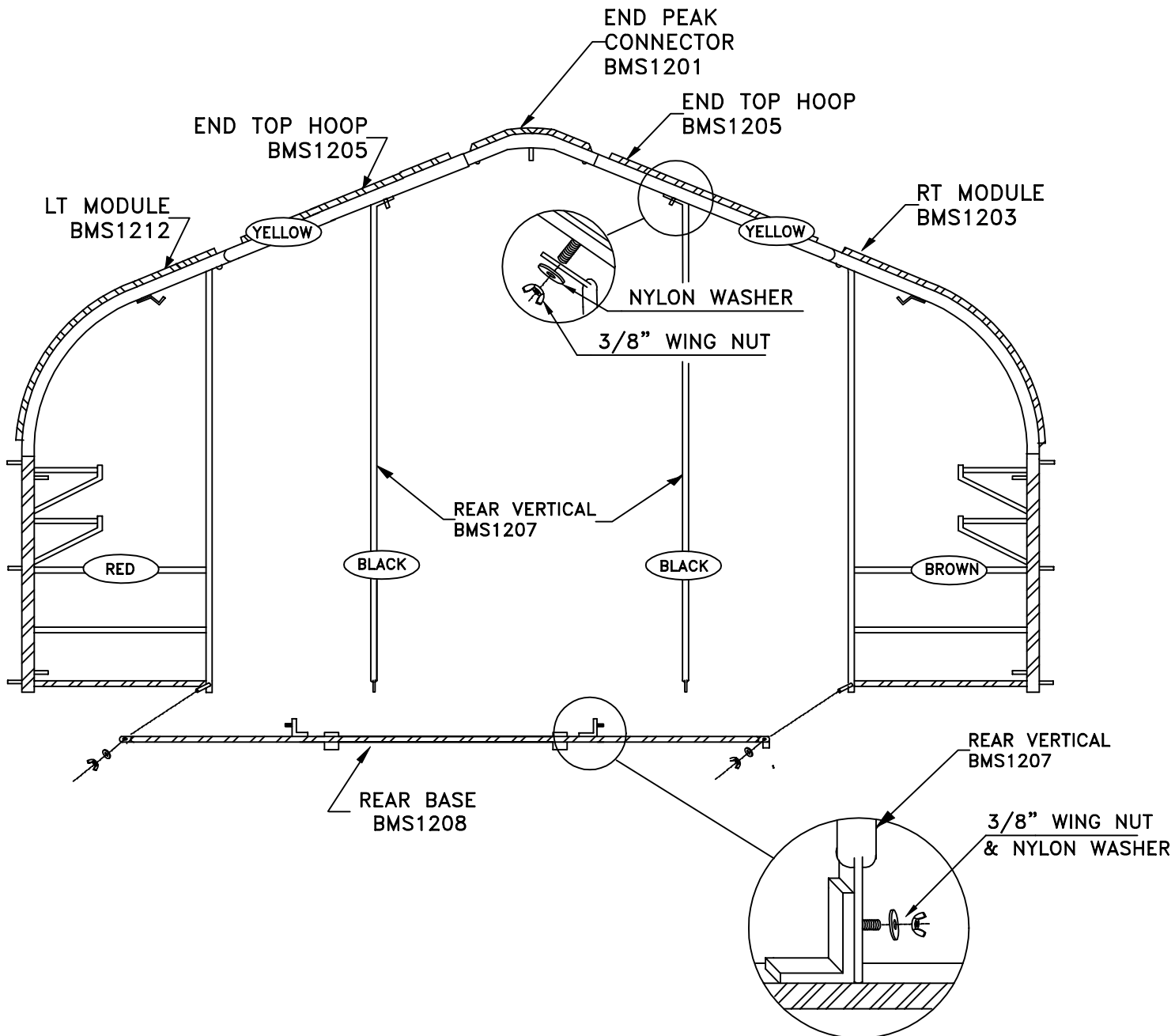


If you have a SIDE DOOR see page fourteen.

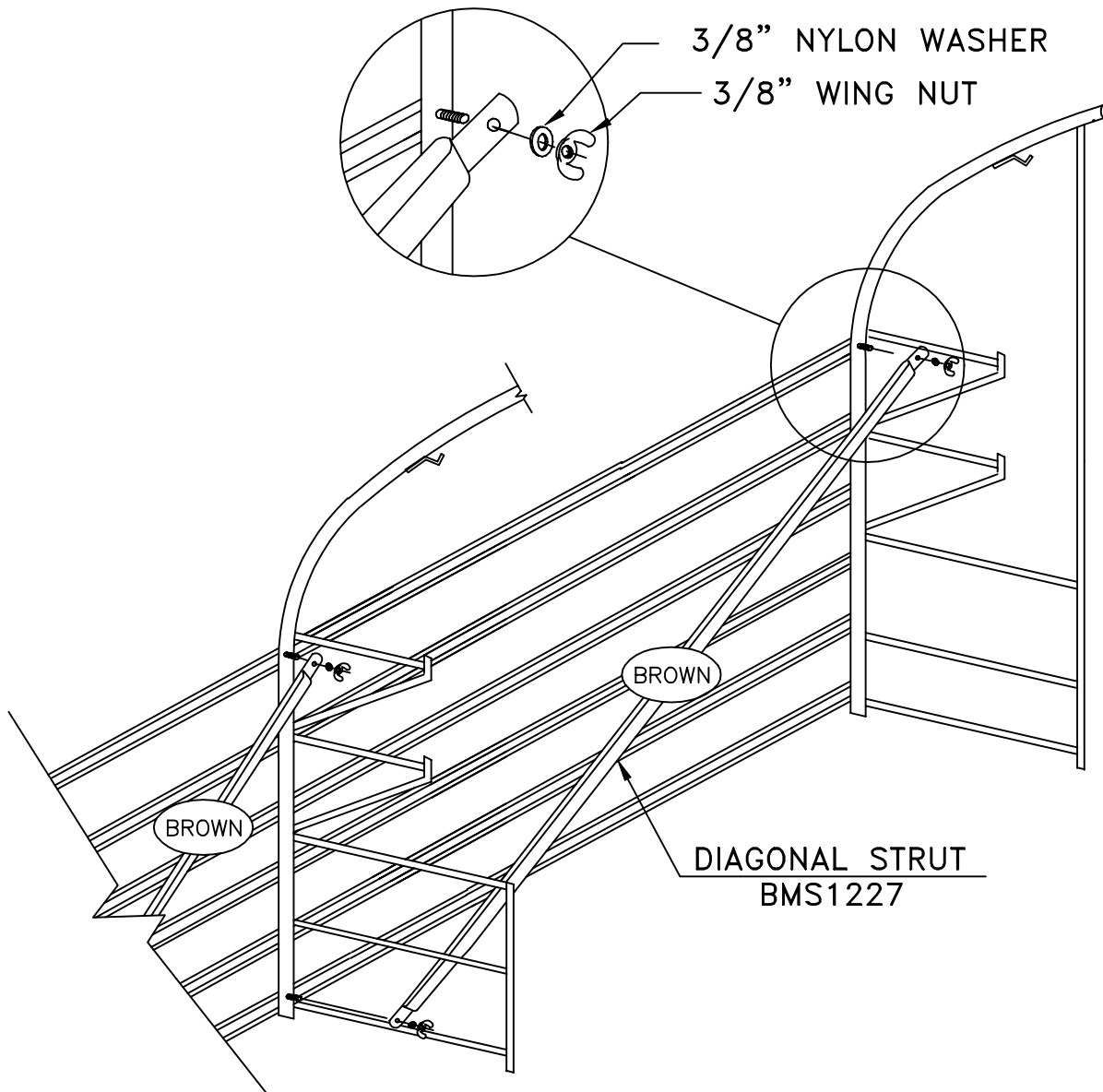
8. Assemble intermediate frame components as shown. Be sure all studs on power poles face the same direction and the holes in the intermediate top hoops(BMS1211) are at the peak of the house.
9. Once complete, raise and attach to previous frame section using the slide panels.
10. Repeat steps 8 and 9 until all intermediate frame components are assembled.

END FRAME SECTION

BMSR 99'

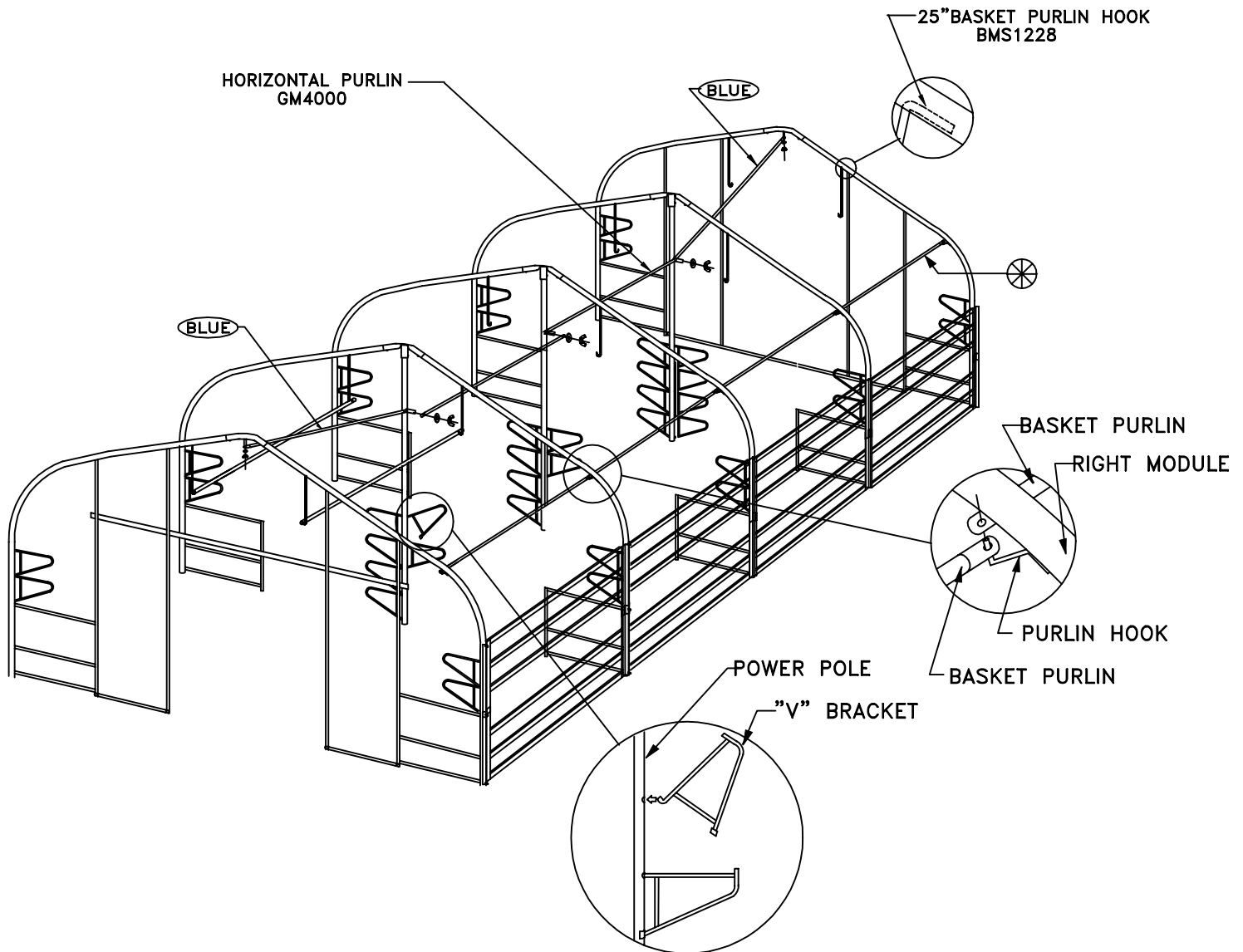


11. Arrange frame components as viewed above on the ground. Be sure to position all components with the aluminum wiggle base as shown.



12. All Bench-Mart SR's are supplied with (8) diagonal struts, except the 18' model (4). Install diagonal struts as shown above. ((2) struts per corner; (1) per corner on the 18' model.)

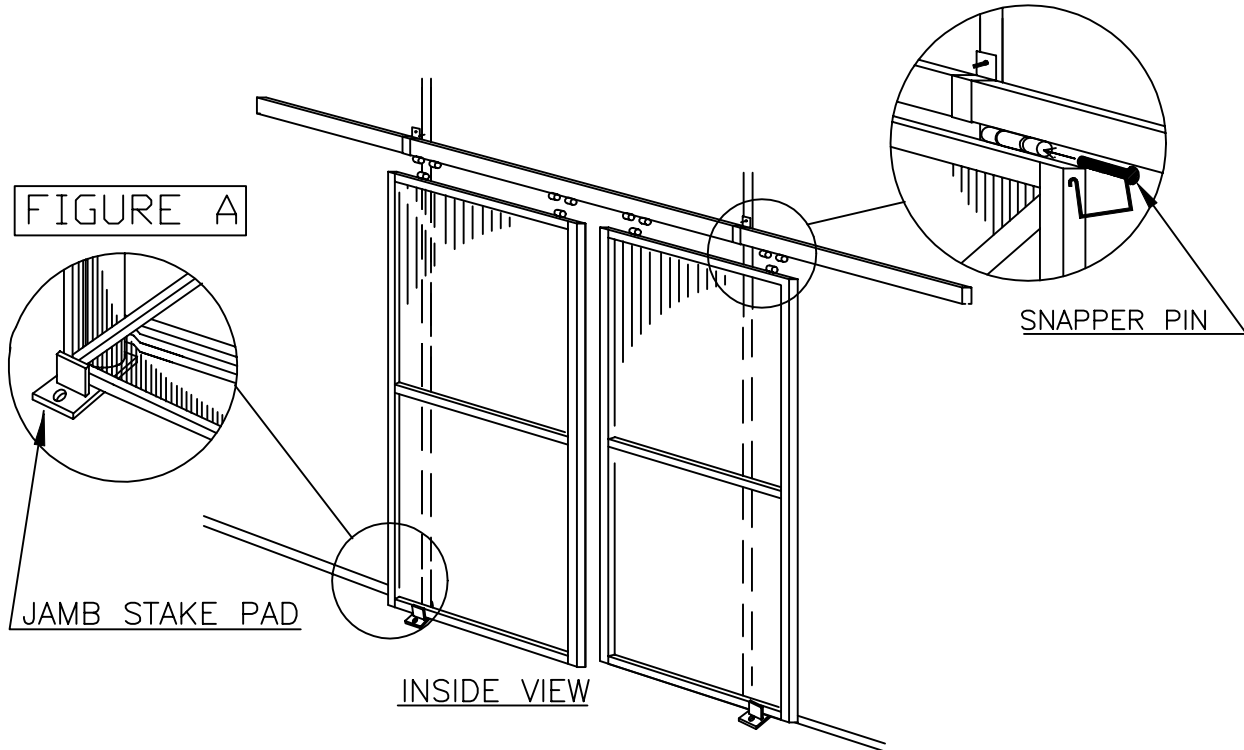
DO NOT CONTINUE CONSTRUCTION UNTIL THE DIAGONAL STRUTS ARE IN PLACE AND HAVE BEEN TIGHTENED



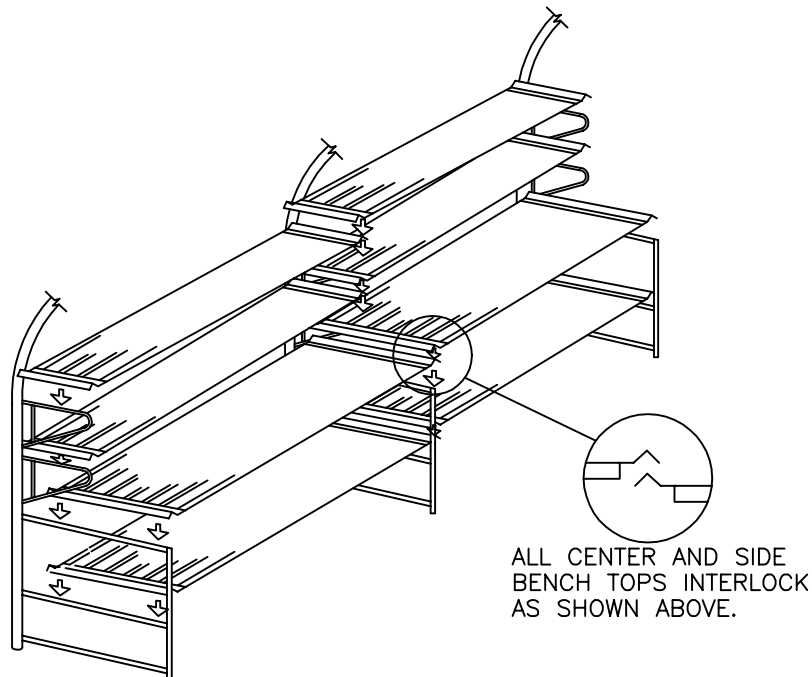
13. Install the diagonal purlin (blue) as shown, along with all horizontal basket purlins (down the center) using nylon washers & wing nuts. Now install horizontal basket purlins (down the side) by attaching them to the purlin hooks as shown. (See ⊗)
14. Install 25" basket purlin hooks as shown, above center benching. Now, all center basket purlins can be installed.
15. Install all V-Brackets as shown.

DOOR & BENCH TOP INSTALLATION

BMSR 99'



16. Install doors using (4) snapper pins as shown.
17. Door must be installed inside the jamb stake pad as shown in Figure A.



18. Place bench tops throughout the greenhouse as shown.

H108 74617-8

CONCRETE BLOCK

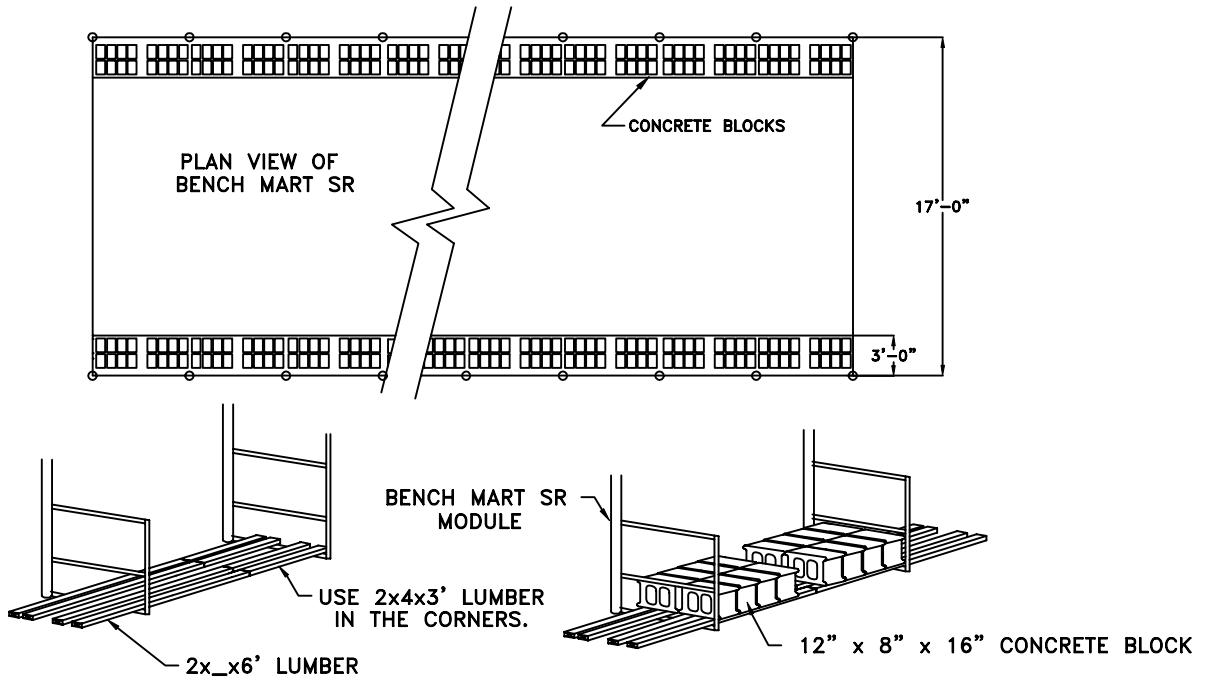
IMPORTANT NOTE:

LUMBER SUCH AS 2 x 4's, 2 x 6's OR 1" THICK PLYWOOD MUST BE USED TO HELP CONCENTRATE BLOCK WEIGHT OVER THE BENCH FRAMES.

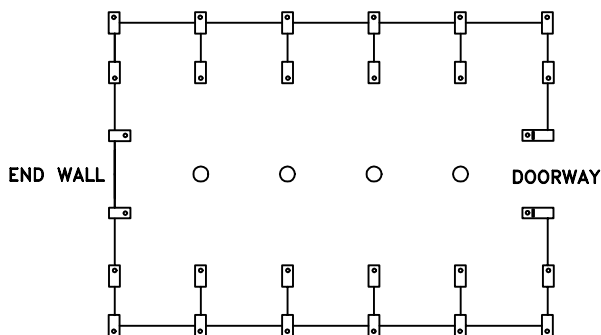
DIVERTING FROM THIS PROCEDURE CAN CAUSE SERIOUS DAMAGE TO YOUR STRUCTURE UNDER WINDY CONDITIONS.

	BLOCK COUNT	2x_6 COUNT	2x_3 COUNT	TOTAL WEIGHT
BMSR-18	96	16	16	4,800
BMSR-24	128	24	16	6,400
BMSR-30	160	32	16	8,000
BMSR-36	192	40	16	9,600
BMSR-42	224	48	16	11,200
BMSR-48	256	56	16	12,800
BMSR-54	288	64	16	14,400
BMSR-60	320	72	16	16,000
BMSR-66	352	80	16	17,600
BMSR-72	384	88	16	19,200
BMSR-78	416	96	16	20,800
BMSR-84	448	104	16	22,400
BMSR-90	480	112	16	24,000
BMSR-96	512	120	16	25,600

EACH BLOCK = 50 POUNDS

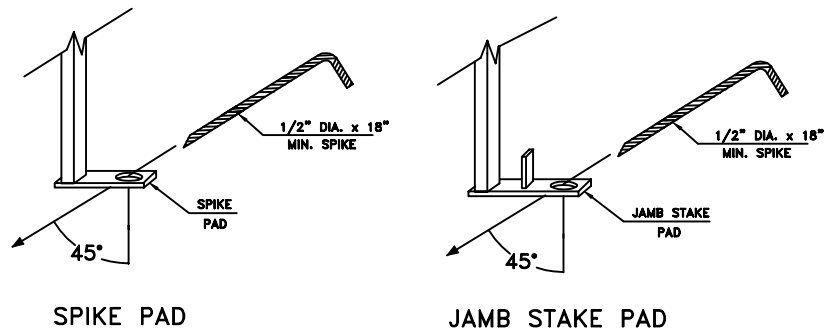


SPIKES



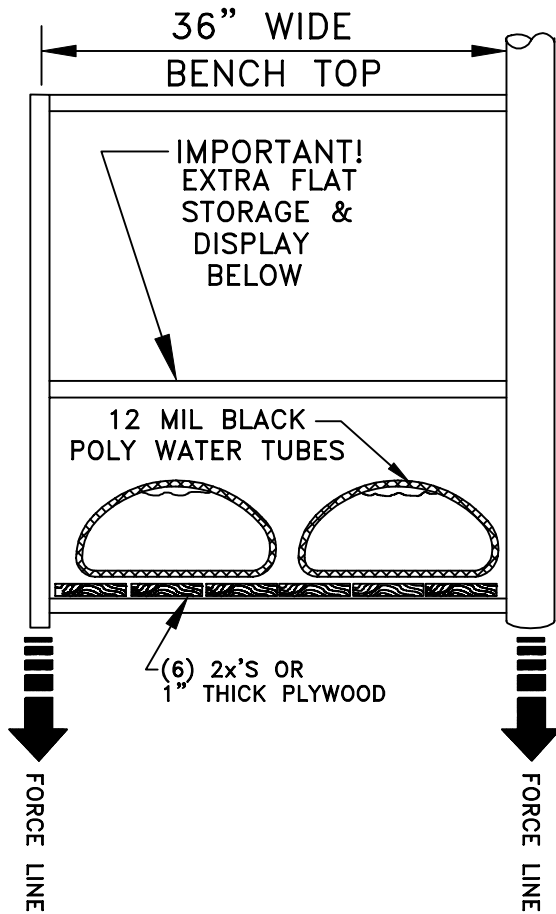
PLAN VIEW

□ = SPIKE PAD LOCATION
 □ = JAMB STAKE PAD LOCATION



H108 74618-8

WATER TUBES



IMPORTANT NOTE:

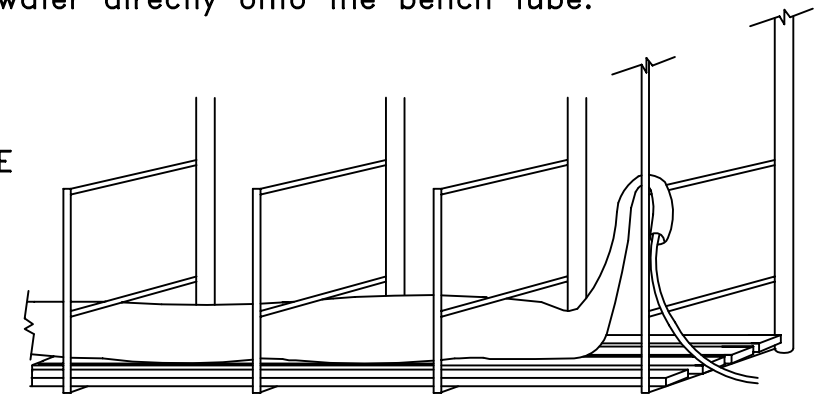
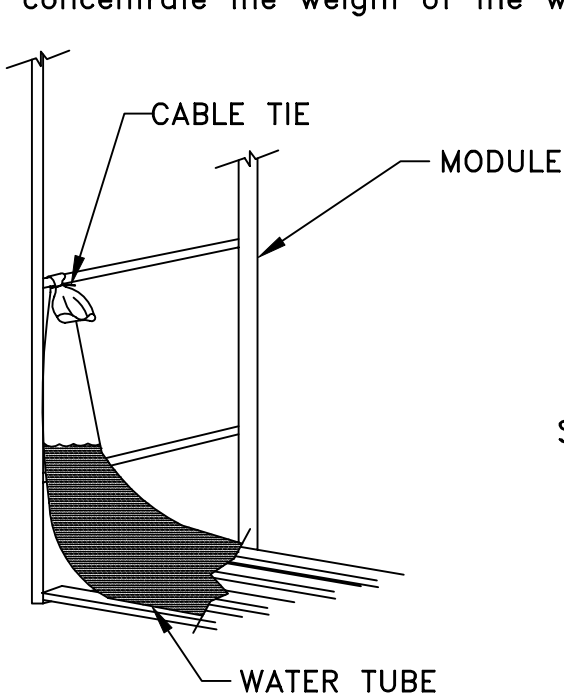
LUMBER SUCH AS 2 x 4's, 2 x 6's OR 1" THICK PLYWOOD MUST BE USED TO HELP CONCENTRATE WATER TUBE WEIGHT OVER THE BENCH FRAMES.

DIVERTING FROM THIS PROCEDURE CAN CAUSE SERIOUS DAMAGE TO YOUR STRUCTURE UNDER WINDY CONDITIONS.

WATER WEIGHTS

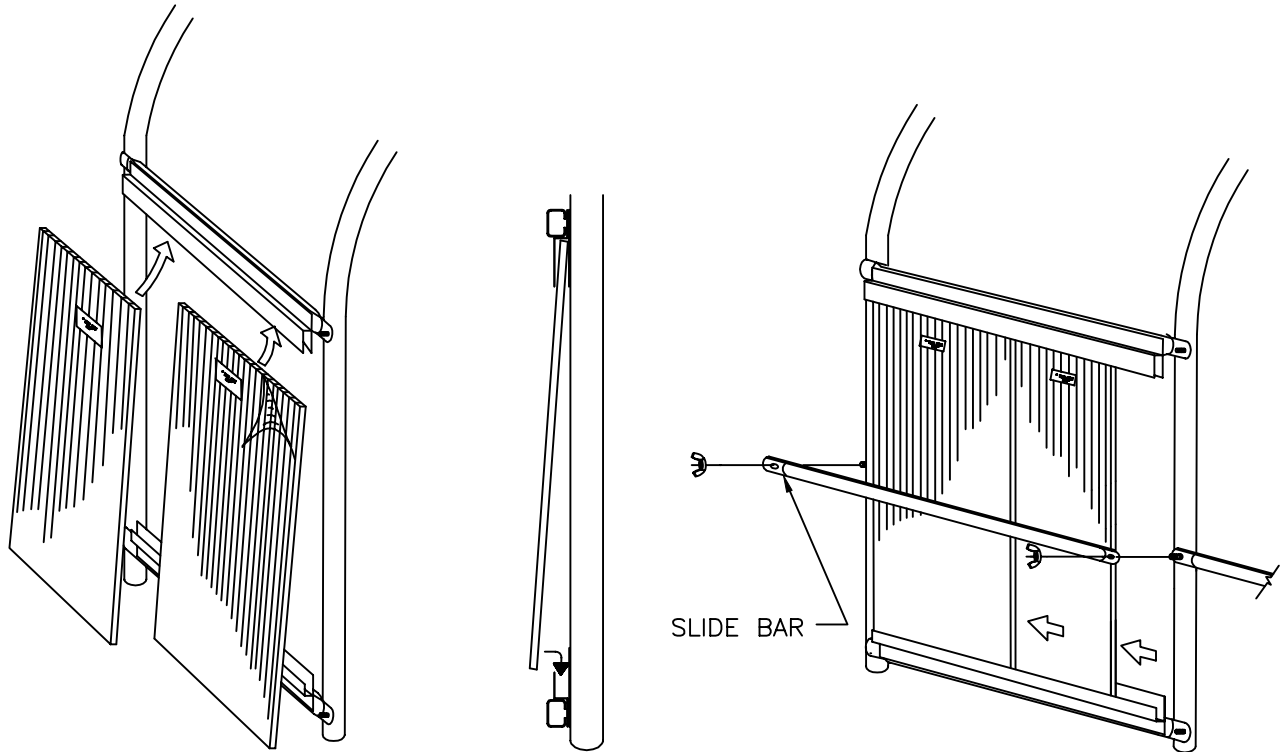
BMSR-18	2,400	LBS/WATER
BMSR-24	3,200	LBS/WATER
BMSR-30	4,000	LBS/WATER
BMSR-36	4,800	LBS/WATER
BMSR-42	5,600	LBS/WATER
BMSR-48	6,400	LBS/WATER
BMSR-54	7,200	LBS/WATER
BMSR-60	8,000	LBS/WATER
BMSR-66	8,800	LBS/WATER
BMSR-72	9,600	LBS/WATER
BMSR-78	10,400	LBS/WATER
BMSR-84	11,200	LBS/WATER
BMSR-90	12,000	LBS/WATER
BMSR-96	12,800	LBS/WATER

After the bench frames are installed, lay some common boards (2 x 's or 1" plywood) on top of the lower bench tube. These will concentrate the weight of the water directly onto the bench tube.



SIDE VIEW SHOWING LOCATION OF WATER TUBE

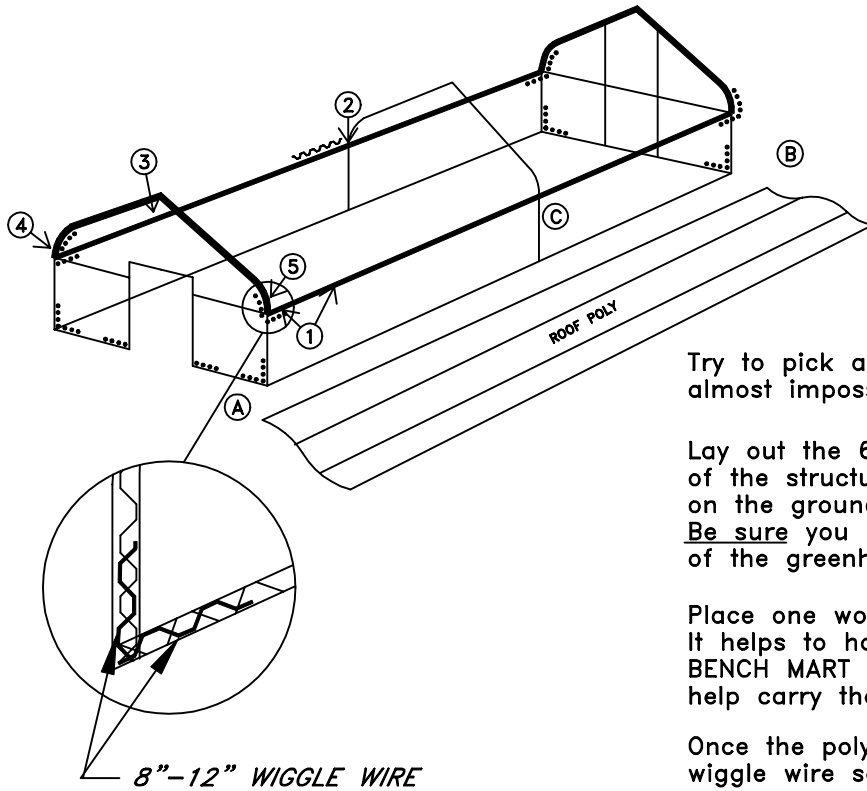
Unroll the black plastic water tubes and place them on top of the boards. Drape the open end up over the end bench frame and use a garden hose to fill the tubes. After the water tube is full, secure it to the bench frame with large black cable ties as the drawing indicates.



19. Remove protective plastic from panels before installation. NOTE: Red sticker on panel must face to the outside of the structure.

20. Install two SLIDE-SIDE panels per opening. Insert the top edge of the panel into the channel on the upper rail, and push up. While maintaining upward pressure, set the bottom edge into the channel on the bottom rail. To allow natural ventilation, simply slide one panel over the other or remove the panels completely. Now install the slide bar onto the studs and attach with wing nuts.

NOTE: IF THE ROOF POLY IS INSTALLED ON A COOL DAY, IT MAY EXPAND AS THE TEMPERATURE WARMS. IT MIGHT BE NECESSARY TO RETENSION THE SHEET OF PLASTIC AT A LATER DATE.



Try to pick a calm day. If it is windy, it's almost impossible to handle the plastic.

Lay out the 6' wiggle wire around the perimeter of the structure so they are handy. Unroll the poly on the ground along the length of the structure. Be sure you have equal overhang at both ends of the greenhouse.

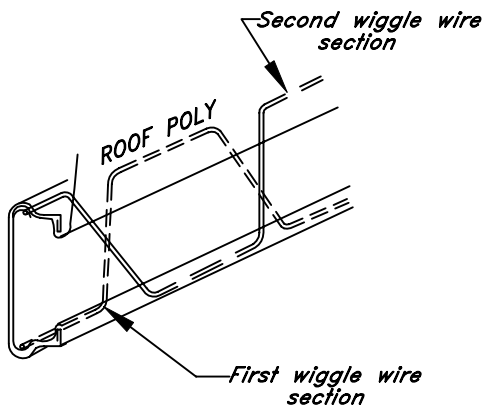
Place one worker at point (A) and one at point (B). It helps to have another worker inside the BENCH MART on a ladder at point (C) to help carry the poly over.

Once the poly is in position, begin installing wiggle wire sections at point (1). Complete this side of the greenhouse, using the edge of the poly as a guide. (3" to 6" overhang is adequate)

Go to the other side and install a wiggle wire section at point (2) (center), and fan out from there. Complete this side.

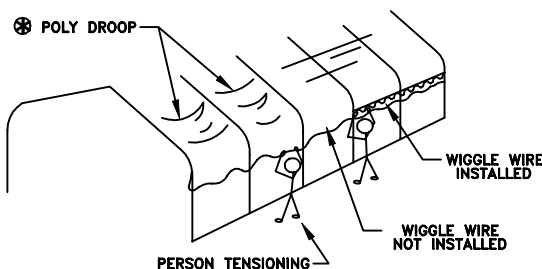
HELPFUL HINT: ☒ To avoid poly drooping between bows, instruct a helper to tension poly one section away from person installing wiggle wire. You will notice the wrinkles disappear when this method is used. When the person who is installing the wiggle wire meets the person tensioning the poly, the tensioner can move to the next bow.

Also, after all wiggle wire has been installed, using a blunt object, press all wiggle wire firmly into base to ensure it has been seated properly.

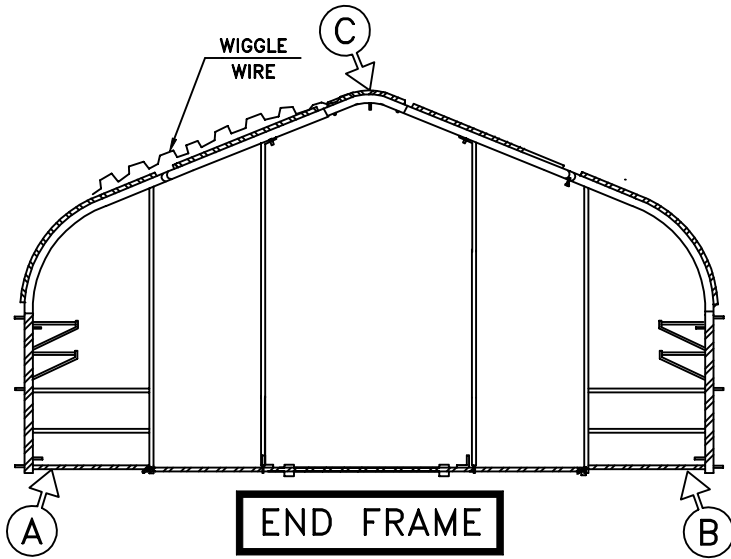


When installing wiggle wire on end hoop, be sure the pattern is reversed. See above drawing.

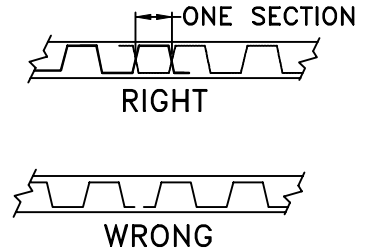
Then, starting in the center of the end hoop, (3), begin installing wiggle wire sections down to point (4). Go back to point (3), and install wiggle wire sections to point (5). Do this on both end hoops.



After this is done, cut remaining pieces of wiggle wire approximately 12" lengths. Use these in the corners (dotted lines) to reinforce the top cover and end poly.



NOTE: OVERLAP WIGGLE WIRE ONE SECTION. BE SURE THE PATTERN IS REVERSED.

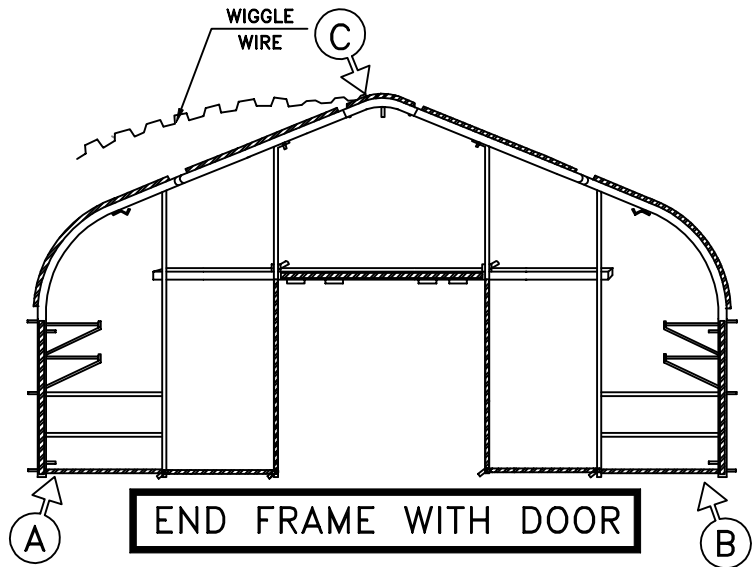
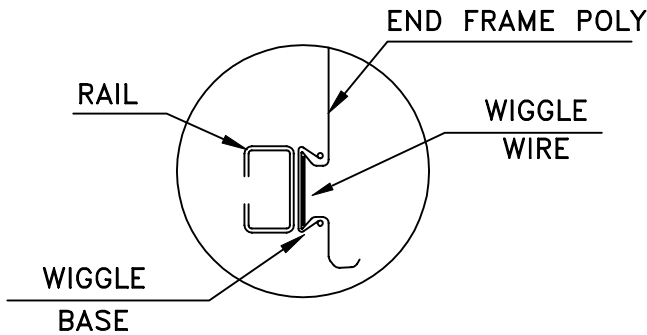


END FRAME WITH NO DOOR

Lay out the wiggly wire sections so they are handy. Unroll poly on the ground next to the end hoop.

Using the edge of the poly as a guide, start installing wiggly wire at point A, and continue along the bottom to point B.

Then, lift poly to the top of the hoop and attach a 6' wiggly wire at point C. Tensioning poly as you go, continue down the left side to the bottom of the hoop. Then, go back to point C and finish down the other side.



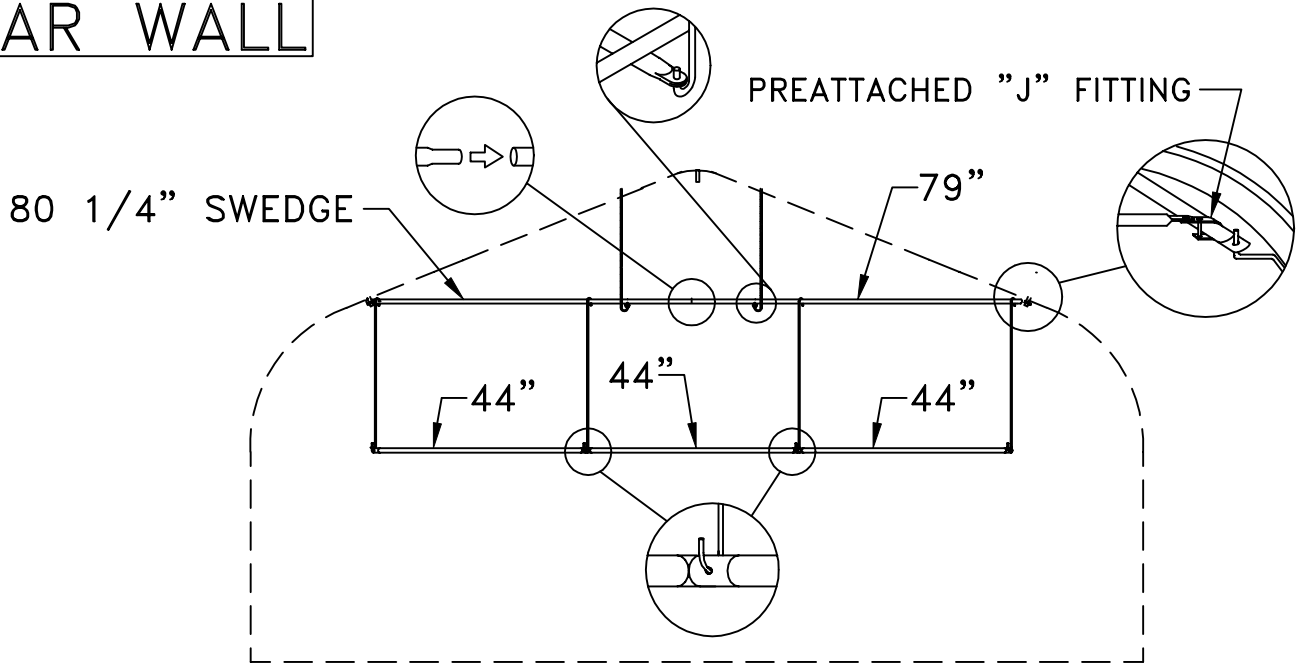
END FRAME WITH DOOR

Lay out the wiggly wire sections so they are handy. Unroll poly on the ground next to the end hoop.

Start installing wiggly wire at point A, and continue along the bottom to point B. Then, lift poly to the top of the hoop and attach wiggly wire at point C. Tensioning poly as you go, continue down the left side to the bottom of the hoop. Then, go back to point C and finish down the other side.

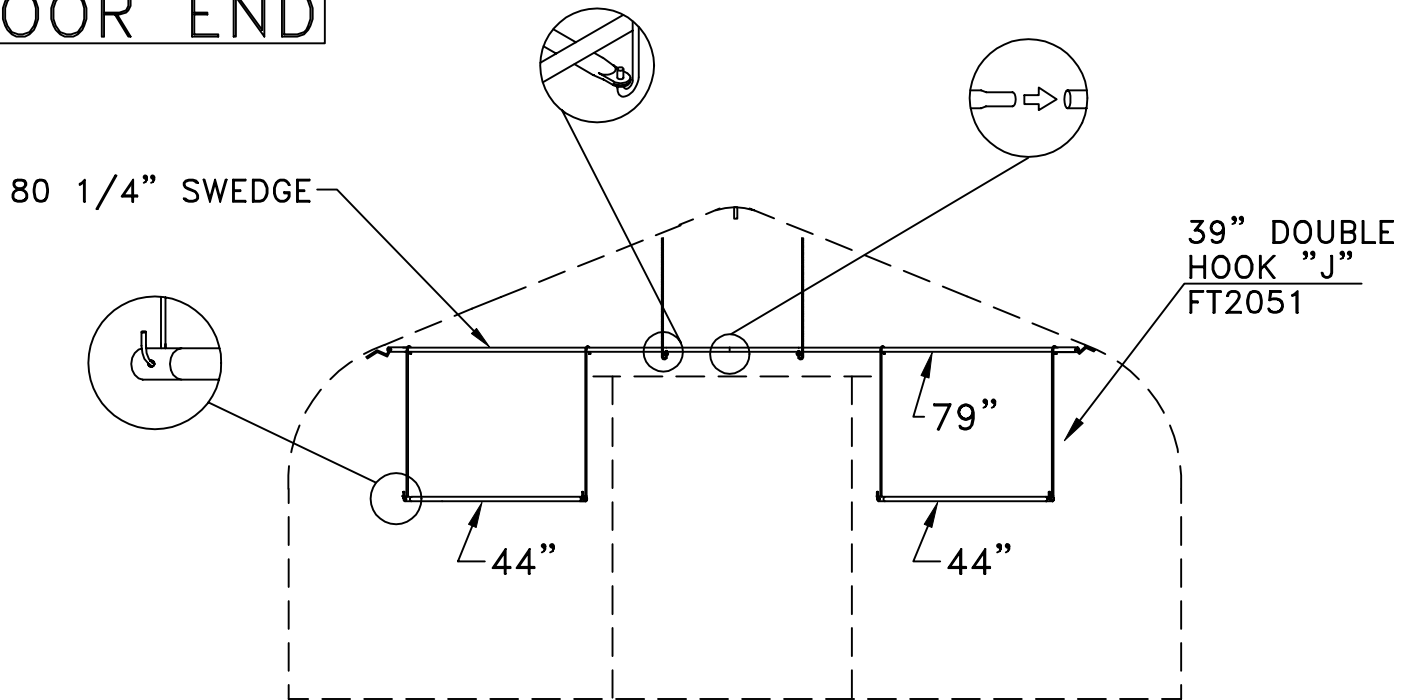
Install wiggly wire around the door, then trim the excess poly.

REAR WALL



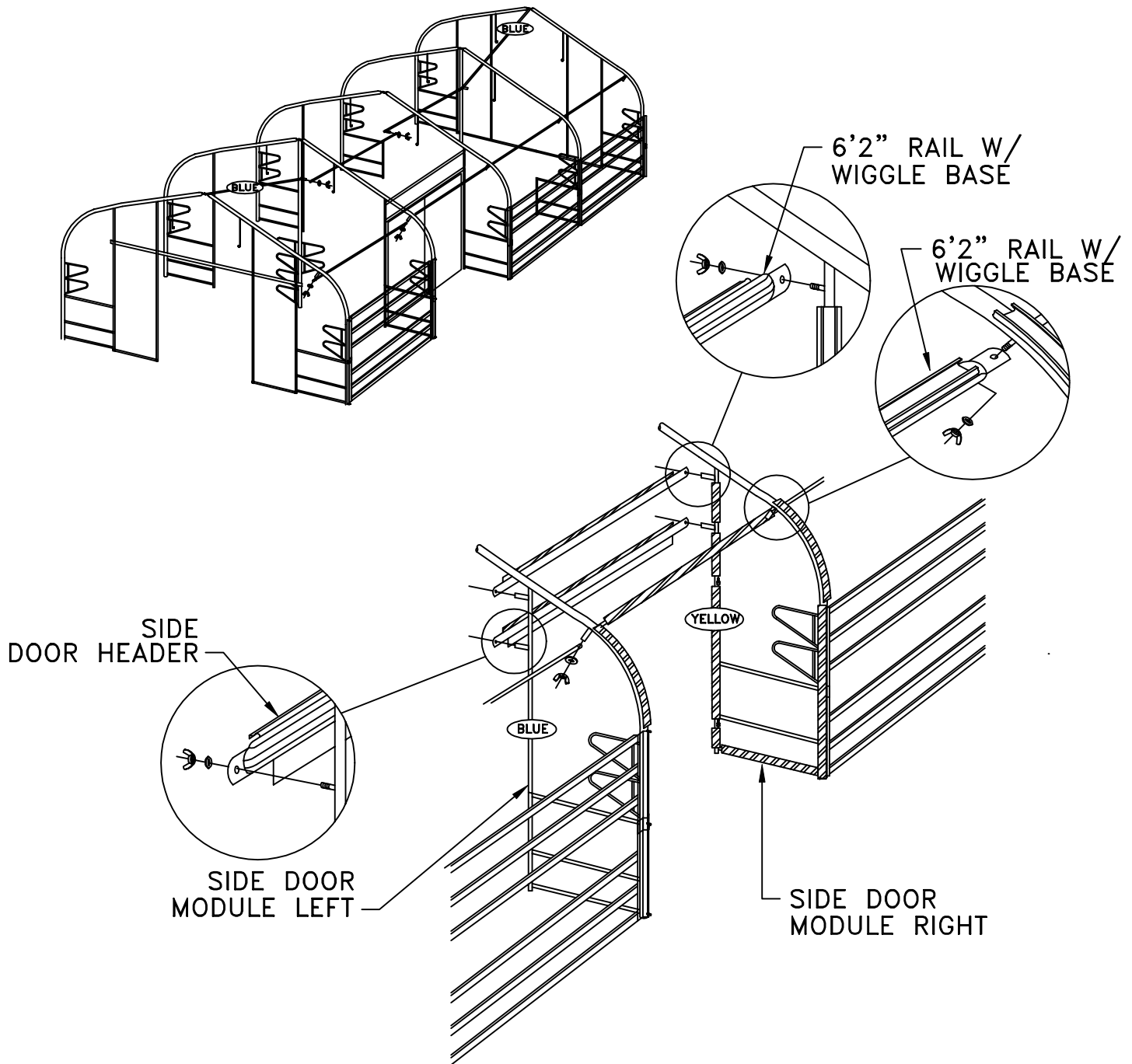
Assemble basket purlin parts as shown.

DOOR END



SIDE DOOR INSTALLATION

BMSR 99'



Determine your side door location.
Install the side door modules as shown above.
Then, install the door header and 6'2" rails with wiggly base.

H118 33741-6

SAFETY GUIDELINES

Do not climb, sit on, or use this product as a ladder due to possible injuries.

Do not place or install electrical items on this product. Wet conditions are typical and electrical shock is possible.

Do not place this product on a slope that exceeds 10 degrees.

CARE & MAINTENANCE

To remove loose soil and debris, simply spray the soiled areas with a garden hose.

Prior to storage, all surfaces of this product should be sprayed down with water and allowed to dry completely.

Limited Warranty

Poly-Tex, Inc. warrants its products to be free from defects in material and workmanship for a period of (1) year from date of invoice. This warranty is provided to the original purchaser of the product and is not transferable. Poly-Tex does not warrant parts not manufactured by Poly-Tex, but does assign any transferable manufacturer or supplier warranties. Should any defect be found, full repair or replacement will be rendered to the customer at no cost following inspection by a Poly-Tex representative and the return of the defective product to our Castle Rock, MN factory. Expenses for removal or reinstallation of defective products will not be covered by the warranty.

POLY-TEX SHALL NOT BE HELD RESPONSIBLE FOR ANY SPECIAL OR CONSEQUENTIAL DAMAGES, OR FOR ANY DELAY IN PERFORMANCE OF THIS WARRANTY BEYOND OUR CONTROL. THIS WARRANTY IS EXCLUSIVE AND IN LIEU OF ALL OTHER WARRANTIES WHETHER IMPLIED, WRITTEN OR ORAL INCLUDING THE WARRANTIES OF MERCHANTABILITY AND FITNESS FOR A PARTICULAR PURPOSE.

This warranty does not cover damage from customer abuse, misuse, improper installation, customer modifications, customer negligence in performing normal maintenance, damage resulting from acts of nature.

Contact information
Poly-Tex, Inc. PO Box 458
27725 Danville Ave Castle Rock, MN 55010
Toll free (800) 852-3443 Fax (651) 463-2479
www.poly-tex.com