

# FB6000 folding flat mate display

## ASSEMBLY INSTRUCTIONS

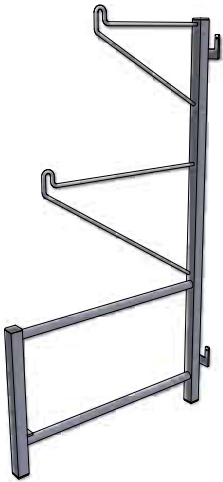


### IMPORTANT

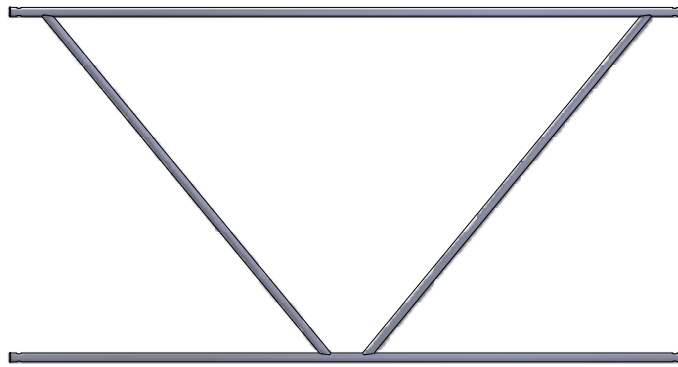
Please read these instructions carefully before you start to assemble this display. Save these instructions for future reference.



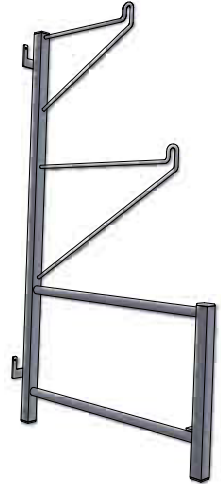
# PARTS IDENTIFICATION



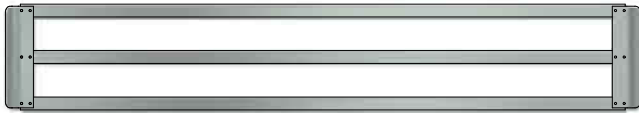
**LEFT BENCH END**  
(FB1626)  
qty (1)



**STABILIZER**  
(FB1642)  
qty (1)



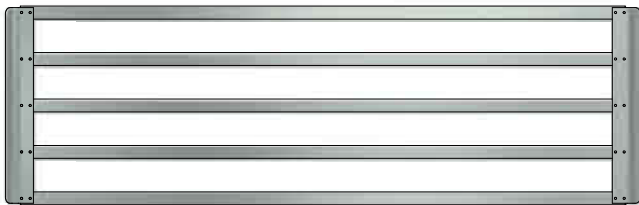
**RIGHT BENCH END**  
(FB1625)  
qty (1)



**12" x 6" BENCH TOP**  
(RF2545)  
qty (1)



**1'-6" x 6" BENCH TOP**  
(RF2554)  
qty (1)



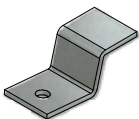
**23" x 6" BENCH TOP**  
(RF2555)  
qty (2)



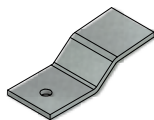
**FLAT WASHER**  
(NB1865)  
qty (4)



**COTTER PIN**  
(NB1611)  
qty (4)



**FLAT STACKER CLIP**  
(FT3200)  
qty (4)



**3/4" BENCH CLIP**  
(FT3602)  
qty (2)



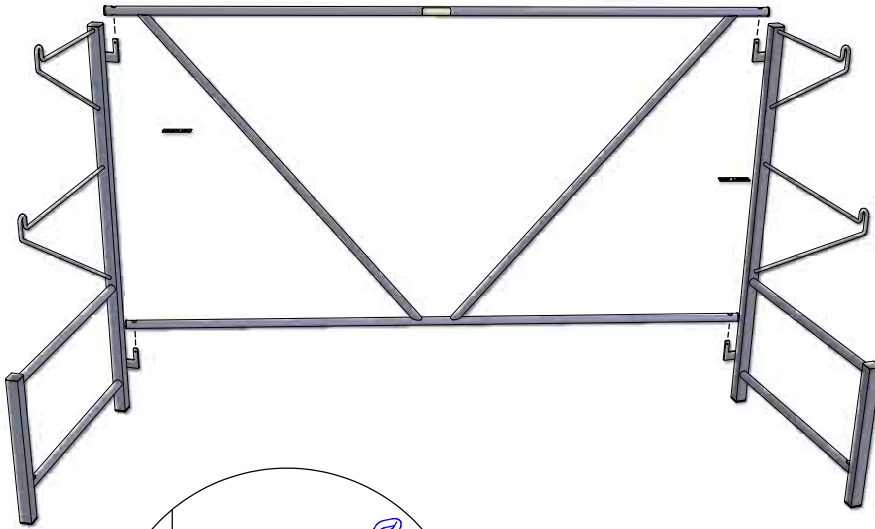
**THUMB SCREW**  
(NB1924)  
qty (6)



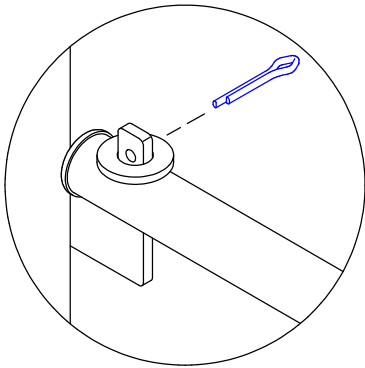
**1/2" PUSH NUT**  
(NB1612)  
qty (4)

# ASSEMBLY INSTRUCTIONS

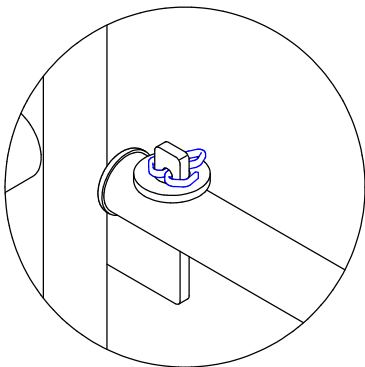
**NOTE:** THE FOLLOWING STEPS ON THIS PAGE ARE ONLY REQUIRED FOR INITIAL ASSEMBLY. AFTER WASHERS, COTTER PINS, AND PUSH NUTS ARE INSTALLED, IT IS NOT NECESSARY TO REMOVE THEM FOR STORAGE. FOR STORAGE, THE BENCH ENDS ARE SIMPLY FOLDED FLAT OVER THE STABILIZER.



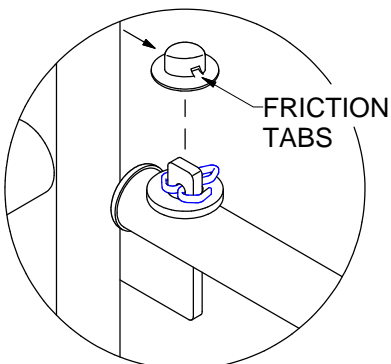
1. PLACE STABILIZER ONTO HINGES AS SHOWN.



2. PLACE FLAT WASHER AS SHOWN AND INSERT COTTER PIN THROUGH HOLE.

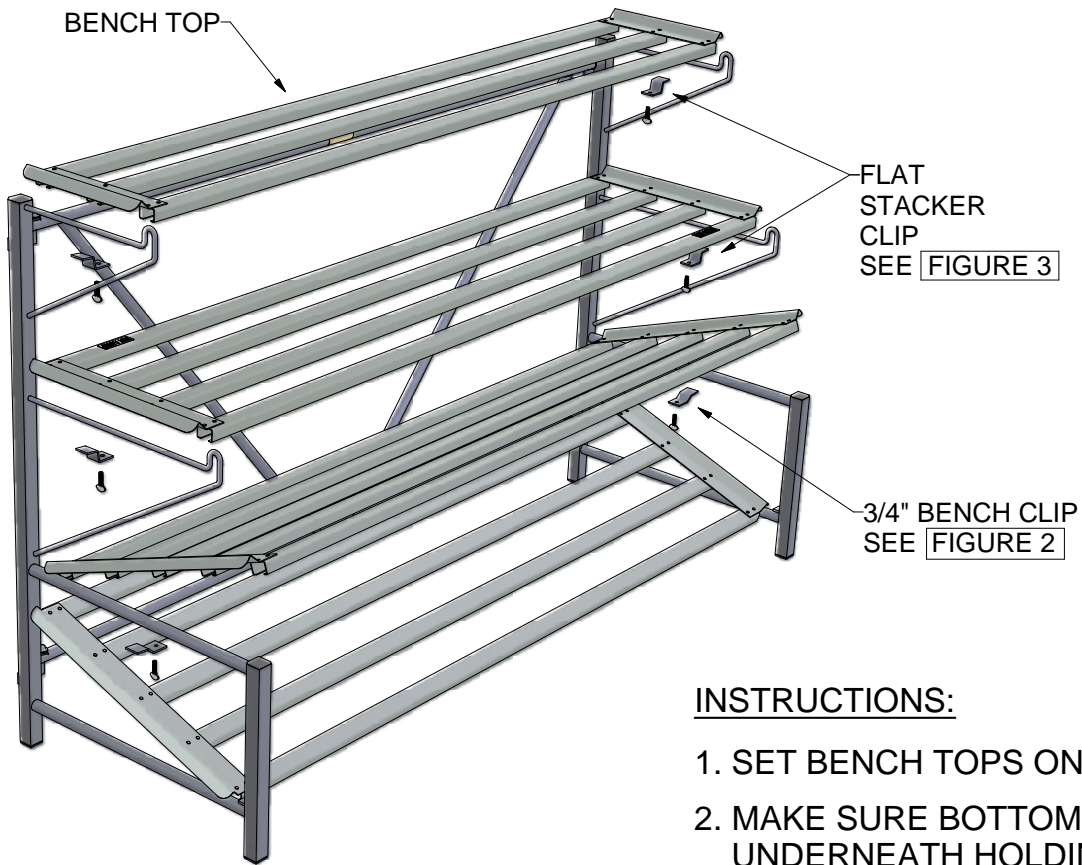


3. BEND ARMS OF COTTER PIN WITH PLIERS.



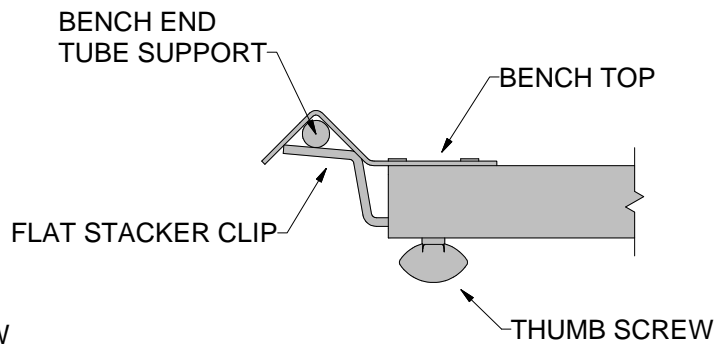
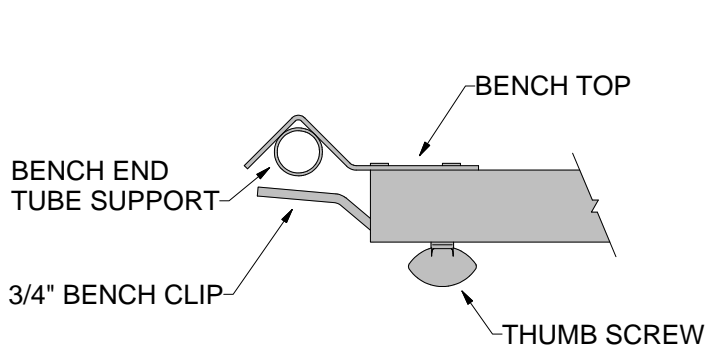
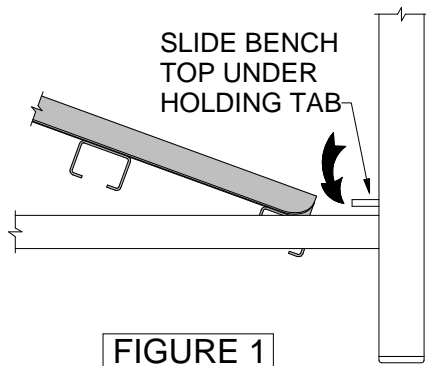
4. LINE UP FRICTION TABS ON PUSH NUT WITH THE SIDES OF THE HINGE AND SEAT USING A HAMMER.

# ASSEMBLY INSTRUCTIONS

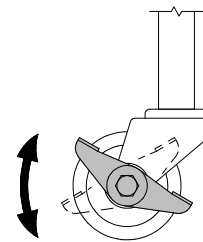


## INSTRUCTIONS:

1. SET BENCH TOPS ONTO BENCH ENDS.
2. MAKE SURE BOTTOM BENCH TOP IS UNDERNEATH HOLDING TAB AS SHOWN IN **FIGURE 1**
3. SECURE TOP TWO BENCH TOPS WITH FLAT STACKER CLIPS. SEE **FIGURE 3**
4. SECURE UPPER 23" x 6" BENCH TOP WITH 3/4" BENCH CLIPS. SEE **FIGURE 2**



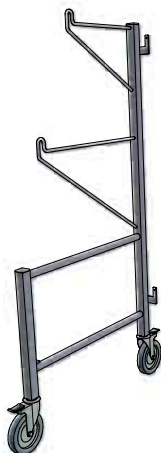
# CASTER OPTION



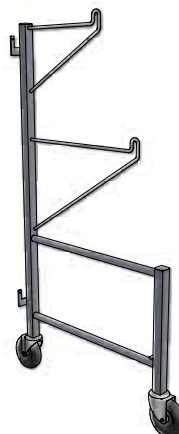
ONCE DISPLAY IS IN PLACE, ALL CASTERS MUST BE LOCKED TO PREVENT MOVEMENT. THE BRAKE IS ACTIVATED BY ROTATING THE LEVER FROM THE "OFF" POSITION TO THE "ON" POSITION.

## CASTER OPTION PARTS IDENTIFICATION

LEFT BENCH END  
WITH CASTERS  
(FB1631)  
qty (1)



RIGHT BENCH END  
WITH CASTERS  
(FB1630)  
qty (1)



## SAFETY GUIDELINES

Do not climb, sit on, or use this product as a ladder due to possible injuries.

Do not place or install electrical items on this product. Wet conditions are typical and electrical shock is possible.

Do not place this product on a slope that exceeds 10 degrees.

If your display does not have casters, do not move this display after product is in place. Damage to display and injuries may occur.

If your display does have casters, once in place, lock all casters to prevent movement.

## CARE & MAINTENANCE

To remove loose soil and debris, simply spray the soiled areas with a garden hose.

Prior to storage, all surfaces of this product should be sprayed down with water and allowed to dry completely.

Store folding frames in a flat position.

## TOOLS & EQUIPMENT REQUIRED

Hammer, Pliers

### Limited Warranty

Poly-Tex, Inc. warrants its products to be free from defects in material and workmanship for a period of (1) year from date of invoice. This warranty is provided to the original purchaser of the product and is not transferable. Poly-Tex does not warrant parts not manufactured by Poly-Tex, but does assign any transferable manufacturer or supplier warranties. Should any defect be found, full repair or replacement will be rendered to the customer at no cost following inspection by a Poly-Tex representative and the return of the defective product to our Castle Rock, MN factory. Expenses for removal or reinstallation of defective products will not be covered by the warranty.

**POLY-TEX SHALL NOT BE HELD RESPONSIBLE FOR ANY SPECIAL OR CONSEQUENTIAL DAMAGES, OR FOR ANY DELAY IN PERFORMANCE OF THIS WARRANTY BEYOND OUR CONTROL. THIS WARRANTY IS EXCLUSIVE AND IN LIEU OF ALL OTHER WARRANTIES WHETHER IMPLIED, WRITTEN OR ORAL INCLUDING THE WARRANTIES OF MERCHANTABILITY AND FITNESS FOR A PARTICULAR PURPOSE.**

This warranty does not cover damage from customer abuse, misuse, improper installation, customer modifications, customer negligence in performing normal maintenance, damage resulting from acts of nature.

Contact information  
Poly-Tex, Inc. PO Box 458  
27725 Danville Ave Castle Rock, MN 55010  
Toll free (800) 852-3443 Fax (651) 463-2479  
[www.poly-tex.com](http://www.poly-tex.com)