

FB3026 tall 3-level display

ASSEMBLY INSTRUCTIONS

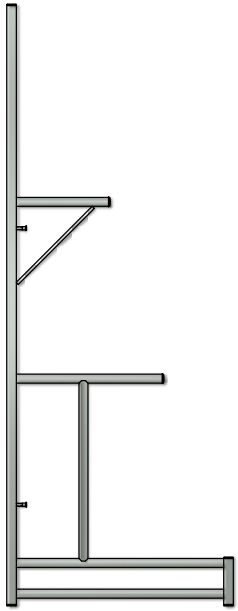


IMPORTANT

Please read these instructions carefully before you start to assemble this display. Save these instructions for future reference.



PARTS IDENTIFICATION



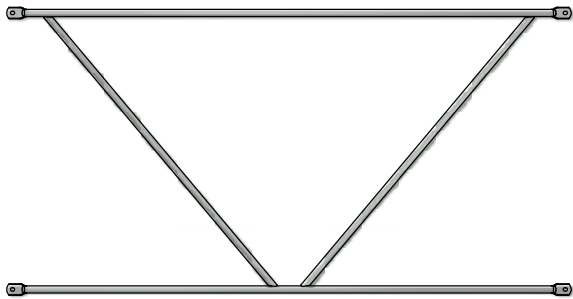
FB3027
BENCH END
(2)



RF2545
12" BENCH TOP
(1)



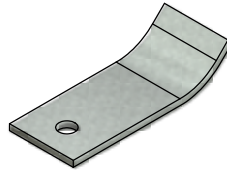
RF2554
1'-6" BENCH TOP
(2)



FB2533
STABILIZER
(1)



FB3028
SIGN HOLDER
(1)



FT3600
NORSTAD CLIP
(6)



NB1924
5/16" x 1" THUMB SCREW
(6)



NB1818
1/4" x 1 3/4" LONG
CARRIAGE BOLT
(2)



NB1902
1/4" WING NUT
(2)



NB1923
NYLON WASHER
(4)



NB1860
1/4" LOCK
WASHER
(2)

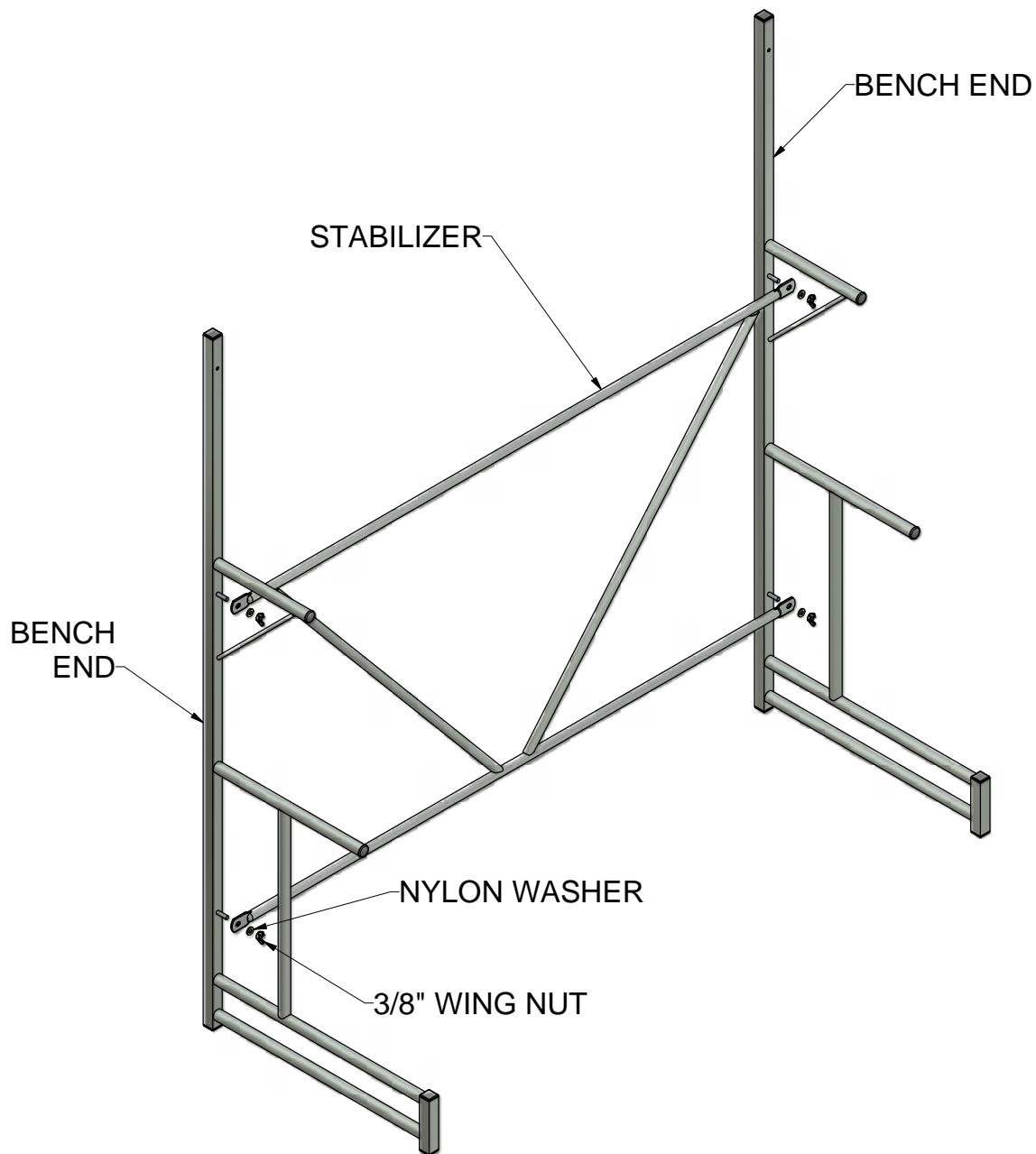


NB1901
3/8" WING NUT
(4)

TOOLS & EQUIPMENT REQUIRED

No tools required to assemble this product.

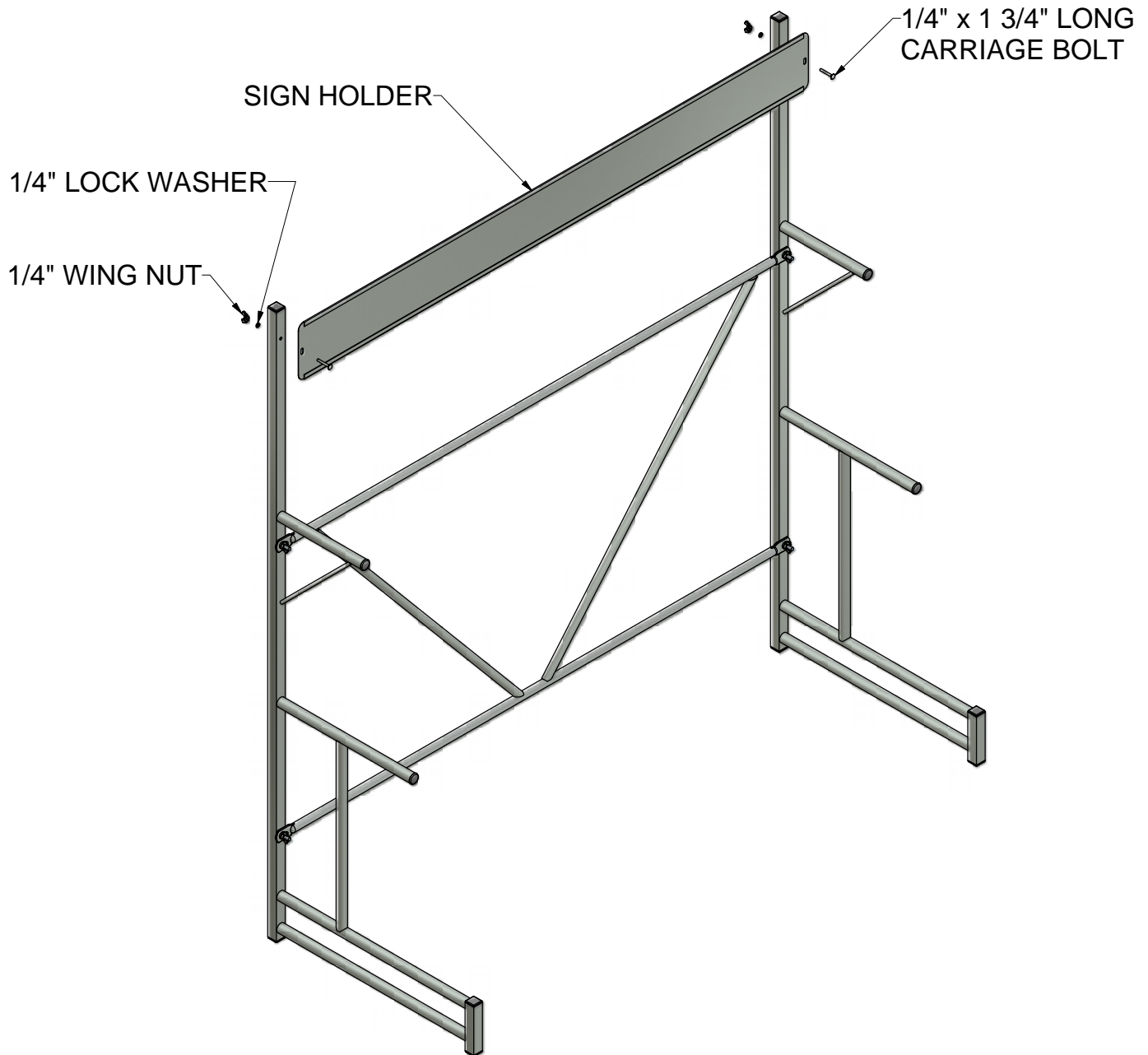
ASSEMBLY INSTRUCTIONS



INSTRUCTIONS:

1. ATTACH STABILIZER TO BENCH ENDS USING 3/8" WING NUTS AND NYLON WASHERS.

ASSEMBLY INSTRUCTIONS



INSTRUCTIONS:

2. ATTACH SIGN HOLDER TO HOLES IN BENCH ENDS USING 1/4" x 1 3/4" LONG CARRIAGE BOLTS, LOCK WASHERS, AND 1/4" WING NUTS.

ASSEMBLY INSTRUCTIONS

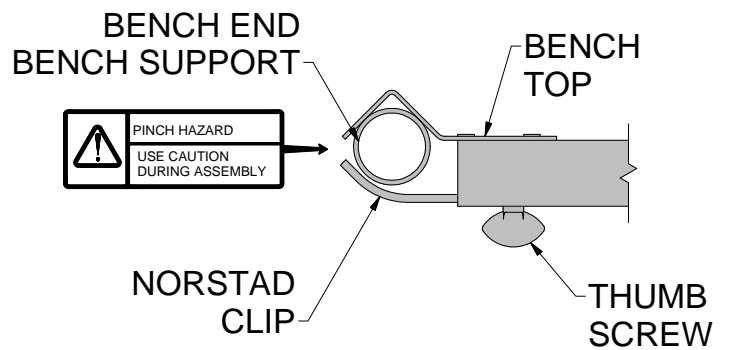
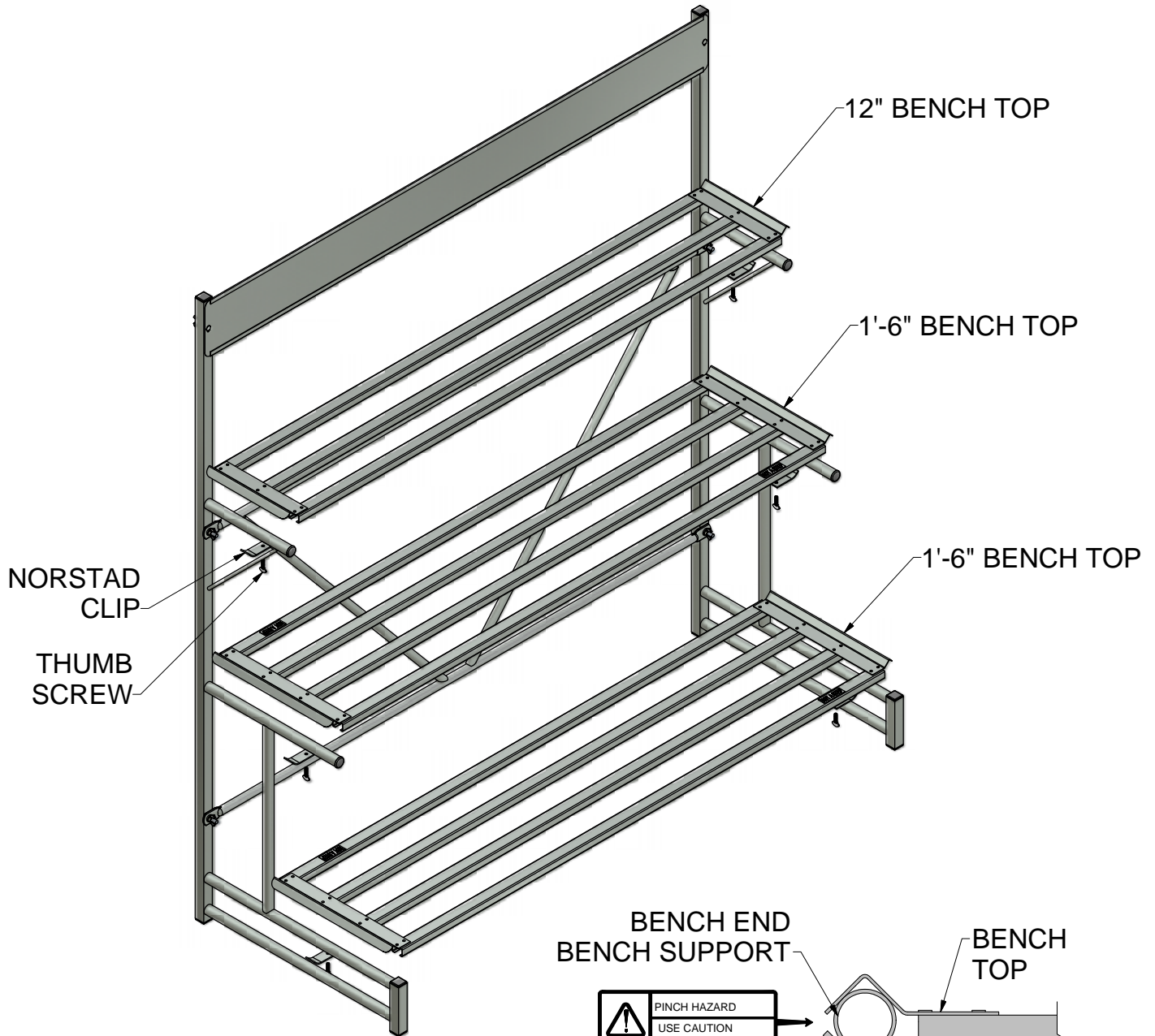
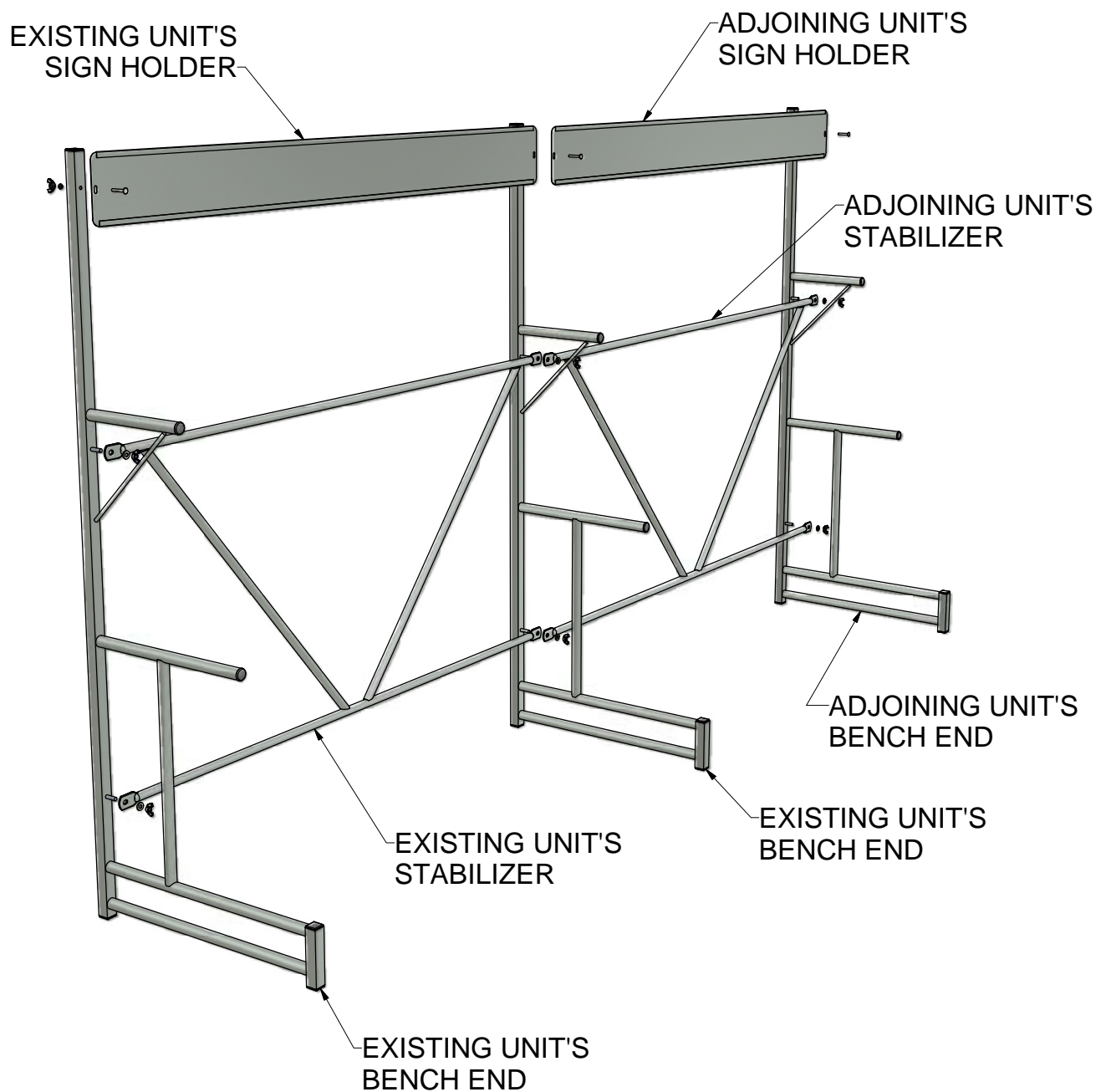


FIGURE 1

INSTRUCTIONS:

3. PLACE BENCH TOPS ON THE BENCH END SUPPORT TUBES.
4. FASTEN TO BENCH ENDS USING NORSTAD CLIPS AND THUMB SCREWS. SEE FIGURE 1.

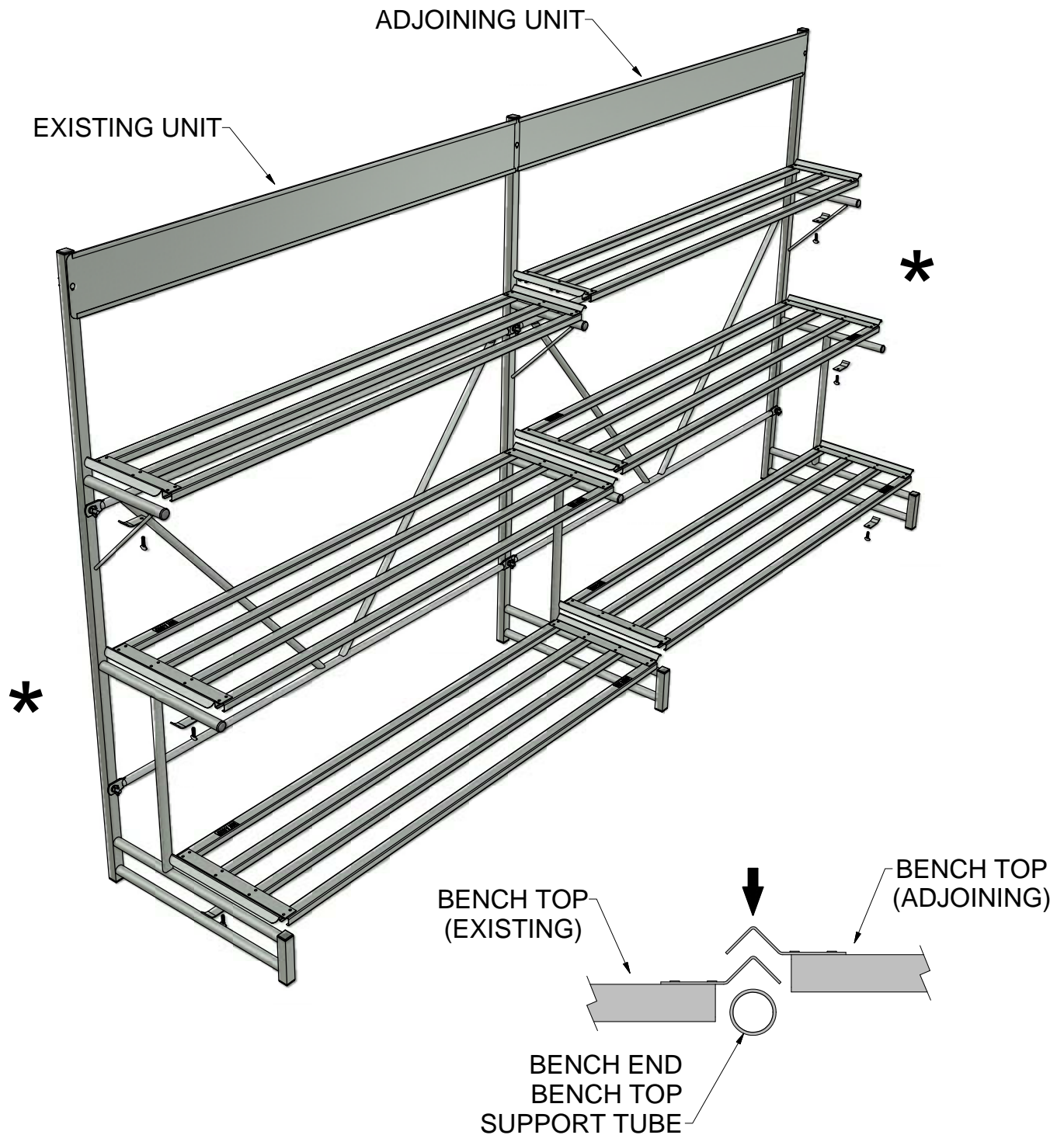
ASSEMBLY INSTRUCTIONS - OPTIONAL CONNECTED RUNS



INSTRUCTIONS:

1. ATTACH ADJOINING UNIT'S STABILIZER AND BENCH END TO THE EXISTING UNIT'S BENCH END.
2. ATTACH ADJOINING UNIT'S SIGN HOLDER TO THE EXISTING UNIT'S BENCH END AND ADJOINING UNIT'S BENCH END.

ASSEMBLY INSTRUCTIONS - OPTIONAL CONNECTED RUNS



INSTRUCTIONS:

3. SET BENCH TOPS DOWN OVERLAPPING EXISTING UNIT'S BENCH TOPS AS SHOWN ABOVE.
4. SECURE NORSTAD CLIPS ONLY ON END UNITS OF MULTIPLE UNITS JOINED TOGETHER (*).

SAFETY GUIDELINES

Do not climb, sit on, or use this product as a ladder. Injuries may occur.

Do not place or install electrical items on this product. Wet conditions are typical and electrical shock may occur.

Do not place this product on a slope that exceeds 3 degrees.

Do not move this display after product is in place. Damage to display and injuries may occur.

Lock casters (when provided) once display is in place to prevent movement.

Remove all debris or obstacles from caster's path before moving.

CARE & MAINTENANCE

To remove loose soil and debris, simply spray the soiled areas with a garden hose.

Prior to storage, all surfaces of this product should be sprayed down with water and allowed to dry completely.

Limited Warranty

Poly-Tex, Inc. warrants its products to be free from defects in material and workmanship for a period of (1) year from date of invoice. This warranty is provided to the original purchaser of the product and is not transferable. Poly-Tex does not warrant parts not manufactured by Poly-Tex, but does assign any transferable manufacturer or supplier warranties. Should any defect be found, full repair or replacement will be rendered to the customer at no cost following inspection by a Poly-Tex representative and the return of the defective product to our Castle Rock, MN factory. Expenses for removal or reinstallation of defective products will not be covered by the warranty.

POLY-TEX SHALL NOT BE HELD RESPONSIBLE FOR ANY SPECIAL OR CONSEQUENTIAL DAMAGES, OR FOR ANY DELAY IN PERFORMANCE OF THIS WARRANTY BEYOND OUR CONTROL. THIS WARRANTY IS EXCLUSIVE AND IN LIEU OF ALL OTHER WARRANTIES WHETHER IMPLIED, WRITTEN OR ORAL INCLUDING THE WARRANTIES OF MERCHANTABILITY AND FITNESS FOR A PARTICULAR PURPOSE.

This warranty does not cover damage from customer abuse, misuse, improper installation, customer modifications, customer negligence in performing normal maintenance, damage resulting from acts of nature.

Contact information
Poly-Tex, Inc. PO Box 458
27725 Danville Ave Castle Rock, MN 55010
Toll free (800) 852-3443 Fax (651) 463-2479
www.poly-tex.com